

## INTENDED USE

Interface bracket for Mekano® CH100-2T allows for easy installation of Mekano® triangular channels to rock bolts in tunnel applications. The interface bracket comes in two parts, and the flexible design allows for easy angle adjustment of Mekano® CH100-2T channels.

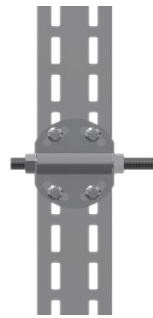
Available in sizes for M16 and M20 threaded rods.

## INSTRUCTION FOR USE

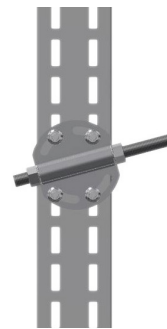
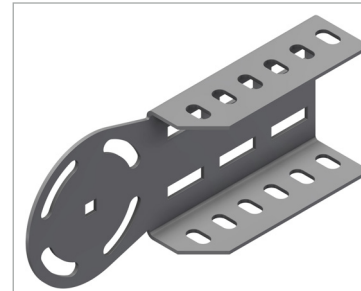
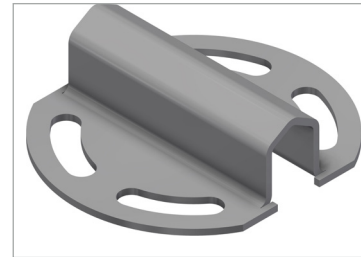
Attach two appropriate size nut to rock bolt, adjust spacing between bolts, attach the interface bracket to the rock bolt between the nuts, adjust and tighten securely.

Mekano® CH100-2T channel can be attached directly to interface bracket, or to hinge part for full flexibility.

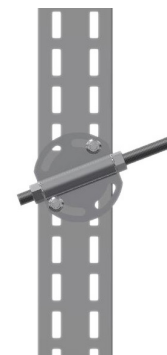
Attach Mekano® channel to interface bracket using M10 self-locking bolts and anti-vibration flange nuts, adjust and tighten securely.



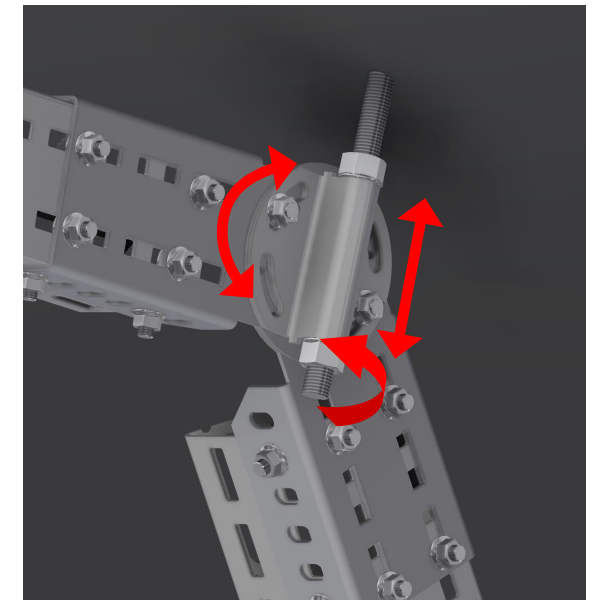
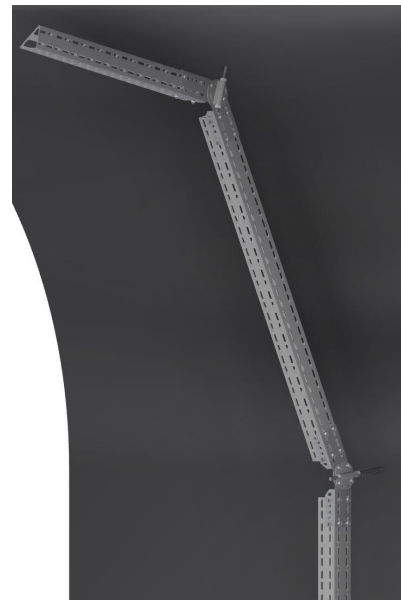
Fasten directly to interface bracket



±14° with 2 bolt connection



±21° with 2 bolt connection



User Guide for Bolts:  
Recommended Torque