

FRP Channel Selector

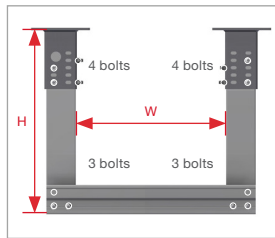
FRP SUPPORT CHANNELS FOR EI&T AND HVAC

Fibreglass channels CH100-1 and CH100-2T are ideally suited for EI&T and HVAC disciplines and offer full adjustability when fitted as part of the Oglænd MultiGrid® system. FRP is safe and easy to cut and no hot work is involved. We also offer convenient drill jigs to increase the accuracy of drilling the connection perforations required. The channel is manufactured using a unique 3-axis mat fiber which delivers good resistance against ‘tearing’ in all directions. Our best practice recommendation is to use SS bolt sets with FRP supports.

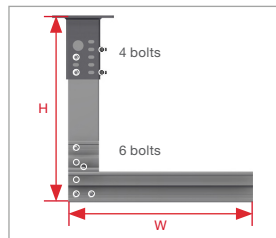
TYPICAL SUPPORT CONFIGURATIONS

FRP CHANNEL CH100-2T (CH100S)

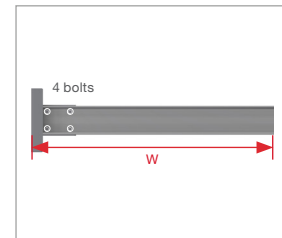
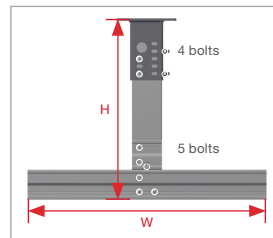
Art. no.: 71322



U-frame: Fitted back to back.



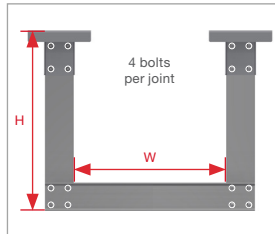
L- and T-frame: Fitted back to back with connection piece.



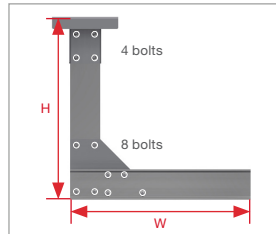
Cantilever: Starter bracket can be used as drill jig.

FRP CHANNEL CH100-1

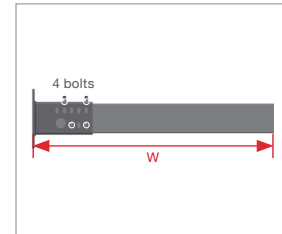
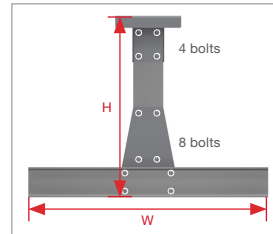
Art. no.: 74991



U-frame: Fitted back to back.







L- and T-frame: Fitted back to back with gusset plate. Use gusset plate as drill jig for connection.



Cantilever: 4 bolt connection.

LOAD DATA

The data is based on testing generally according to IEC 61537 "Cable management – Cable Tray systems and Cable Ladder systems". The safe working load (SWL) includes a safety factor of 3.0. Loadings are according to specification from IEC 61537.

Support Configuration	Width (mm)	Height (mm)	CH100-1 SWL (kg)	CH100-2T SWL (kg)
 U-frame	1000	1000	1100	1000
	1500	1000	-	900
	1950	1000	766	733
 L-frame	700	600	130	50
	900	975	80	-
 T-frame*	1150	1000	766	566
	1600	975	450	-
 Cantilever	650	-	160	-
	700	-	-	180
	850	-	100	-
	900	-	-	133

*Loads based on equal loading on both sides, total load on frame given above.