

## INTENDED USE

The FRP Raised Cover Clamps hold the cover of the FTE tray at an elevated position, allowing for ventilation. The raised cover clamps are not suited for high wind loading.

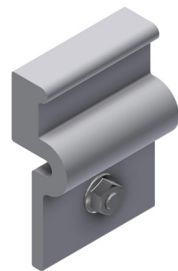
## INSTRUCTION FOR USE

Allow 8 clamps (4 pairs) per 3 m length of tray.

1. Drill a  $\text{Ø}7$  mm hole in the siderail of the tray, using the clamp itself as drill jig.
2. Fasten the clamp to the cable tray using the supplied pan head screw on the inside and the flange nut on the outside of the tray, to minimize the risk of damage to cables. Use torque 8.5 Nm.
3. Snap on FTE cover.

Covers on horizontal runs can now be used in no-wind/-draught areas. For vertical runs or wind/draught areas however, step 4-6 should be carried out for extra securing.

4. Fit drill jig (68998).
5. Pre-drill a 15 mm deep  $\text{Ø}3.3$  mm hole using the drill jig.
6. Fasten cover to the cover clamp using a 4.2x13 self-tapping screw (68999). Use a torque of 2 - 2.5 Nm.



Clamp for ventilated cover FTE

