

## INTENDED USE

Covers for OE ladder straight lengths and fittings offer protection from falling objects, UV radiation from sunlight and give the cables basic protection from weather and vandalism. Covers are supplied flat or peaked according to the size.

## INSTRUCTION FOR USE

Covers can be fitted using proprietary cover clamps. Allow 8 clamps for each 3 meter section for widths up to 450mm, from 600mm widths allow 6 clamps per 1.5 meter section.

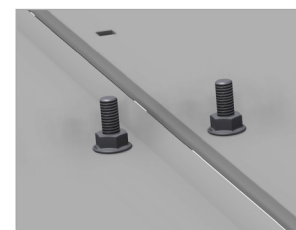
For vertical fittings hurricane clamps should at minimum be used at each end of the vertical run to fix the cover firmly to the ladder and to avoid slipping of covers. Additional hurricane clamps should be used in areas exposed to wind pressure. Vertical covers should always be attached together using connector brackets to avoid covers from loosening and sliding. See ØI-RD-UG-EN-0024 (Hurricane clamps)

Attach the bolts in the cover tops first and fix with a nut. Fit the covers in place, and attach the clamps loosely. Attached the connector bracket(s) and fix with nut. Adjust all parts and tighten securely in place.

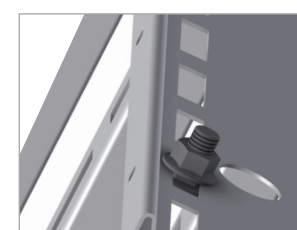
Bends and other fittings have holes for bolting directly onto the ladder rail.



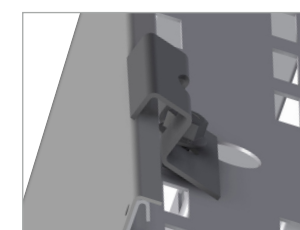
User Guide for Bolts:  
Recommended Torque



1. Fit the connector bolts to the covers.



2. Fit the cover clamp bolts to side rail.



3. Fit covers using standard clamp.



4. Fix the cover securely.



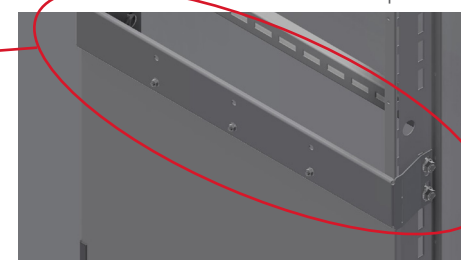
5. Fit the connector clamp.



6. Screw nuts on top of the clamp.



Fitted Example.



Fit hurricane clamp at each end of a vertical run to secure cover firmly to ladder and avoid cover from slipping.

See ØI-RD-UG-EN-0024 for instructions to fit hurricane clamps.

