

## INTENDED USE

Transit frame for routing and supporting cable ladders through grated floors.

## INSTRUCTION FOR USE

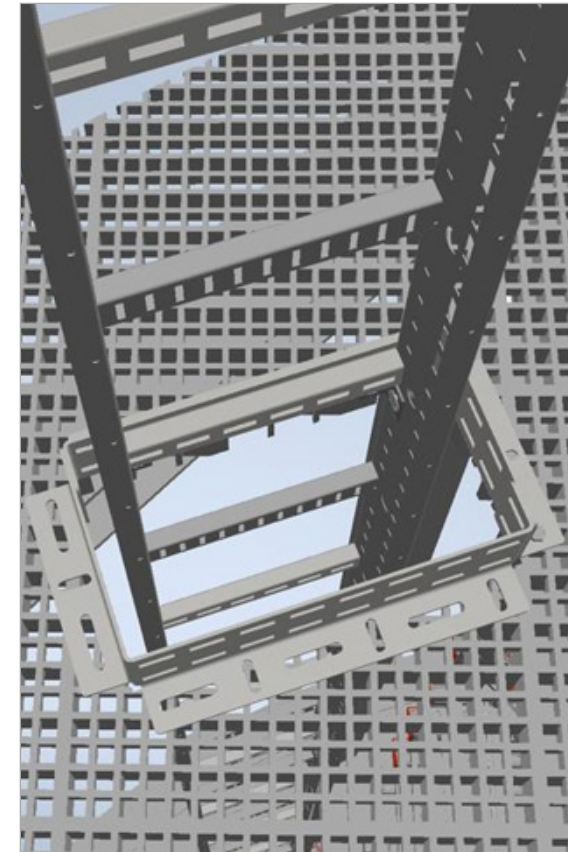
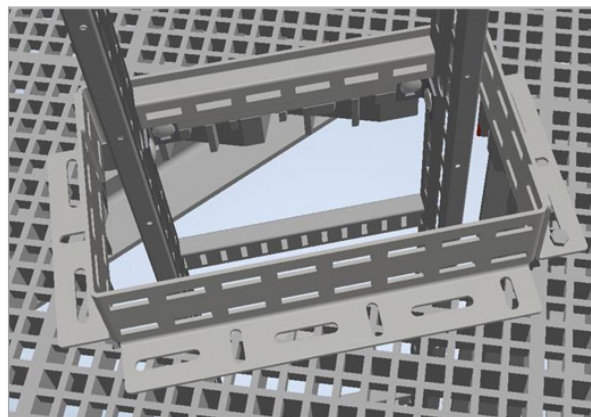
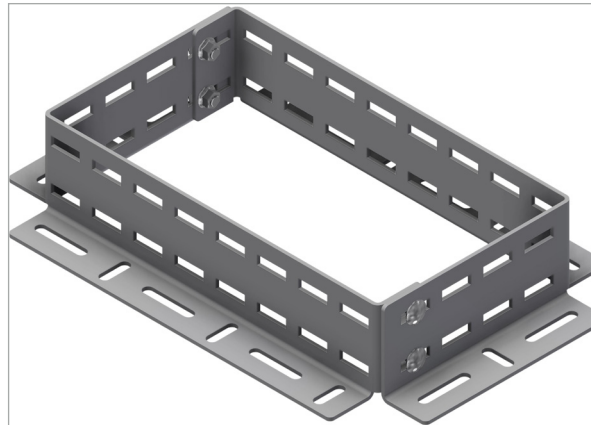
Align the transit frame with the intended routing of the cable ladder and prepared hole by using the frame as a guide.

Align the position of the expansion grating plug (91988) with the transit frame position. Remove the transit frame and install the expansion grating plug according to ØI-RD-UG-EN-0432.

Attach the transit frame to the grating by using expansion plug for grating (91988)

Fix the cable ladder to the transit frame using OE angle brackets or fixing clamps with M10 self-locking bolts.

Adjust and tighten securely.



User Guide for Bolts:  
Recommended Torque