

INTENDED USE

Transit bracket for routing and supporting Cable Ladders through grated floors.

INSTRUCTION FOR USE

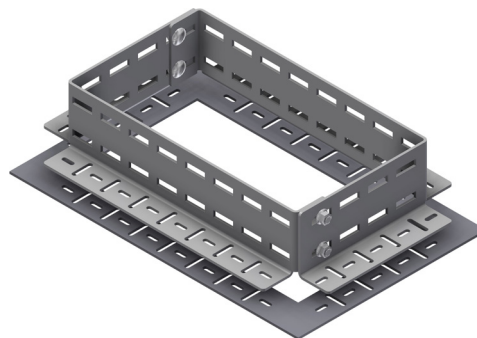
Fit the Transit Bracket over the cable ladder and prepared hole.

Attach the lower and upper section of the transit bracket together using the M6x70 bolts supplied.

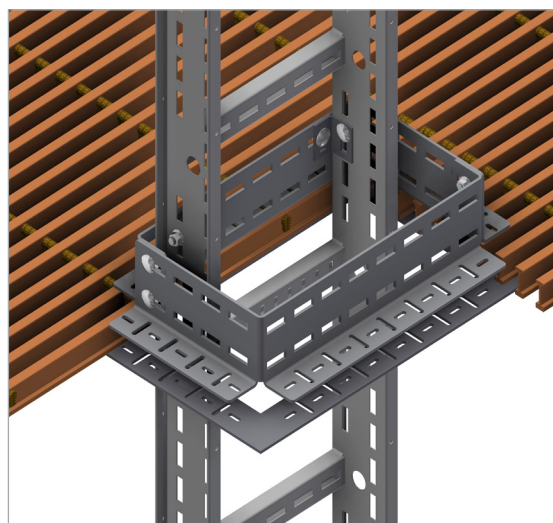
Fix the cable ladder to the bracket using OE angle brackets or fixing clamps with M10 self locking bolts.

Adjust and tighten securely.

Transit Bracket set.



Ladder is attached using OE angle brackets.



User Guide for Bolts:
Recommended Torque