

## INTENDED USE

The GP cover clamp is used to secure cable ladder covers. Installation of the GP cover fixing clamp is quick and easy.

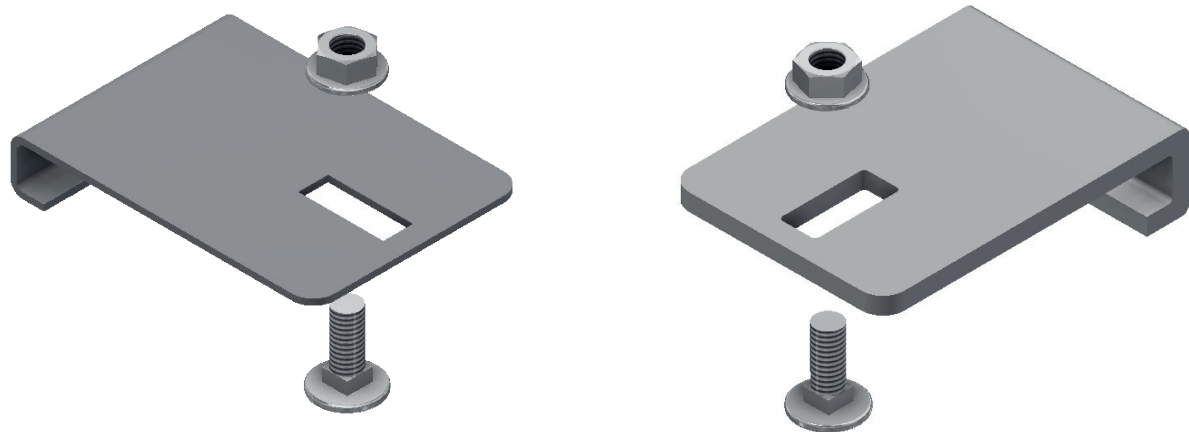
## INSTRUCTION FOR USE

The holes needed to install the GP cover clamp are pre-drilled mid-span on the cable ladder cover. No on-site drilling is needed for standard installations.

1. Attach cover clamp loosely to the cover in the widest position.
2. Place the cover onto FOE cable ladder.
3. Slide Clamp towards cable ladder siderail to secure cover. Adjust and fasten tightly.

## Recommendation

The Heavy Duty Cover Fixing Clamp provides protection from winds up to 90 km/h with 4 clamps per 3 metre section or 160 km/h with 8 clamps.



User Guide for Bolts:  
Recommended Torque

