

INTENDED USE

Powerful magnets that are easy and fast to install to existing structures, require no welding or surface preparation and can be assembled with a installation tool for safe installation. Ideal fixing to structures such as rigs and vessels as temporary or permanent support, particularly where space is limited.

INSTRUCTION FOR USE

Clean surface before installation. Fit magnets to the structure. Fix desired M6 or M10 attachable item using correct bolts. In addition an M10 Stud bolt is designed to convert the threaded connection on the Magnet from female to male.

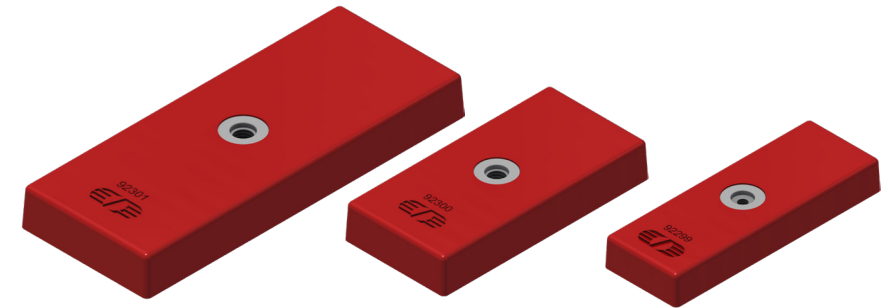
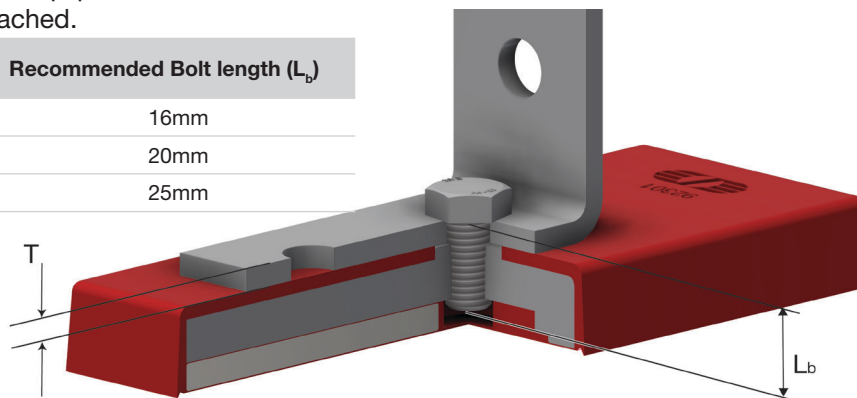
RECOMMENDED TORQUE ON BOLT

Part number	Max recommended Torque (Nm)
92299	8
92300	15
92301	30

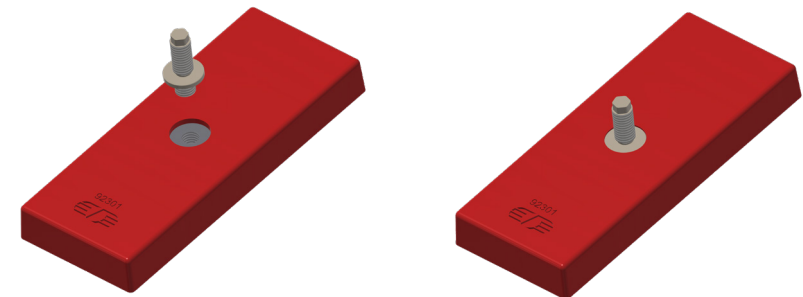
RECOMMENDED BOLT LENGTH

To prevent the bolt from colliding with the rubber bottom of the magnet it is recommended to use following bolt length (L_b) depended on the bracket/equipment material thickness of the product that is to be attached.

Material Thickness (T)	Recommended Bolt length (L_b)
0 to 4mm	16mm
5 to 8mm	20mm
9 to 12mm	25mm



USE A4 M10 STUD BOLT TO CONVERT FROM FEMALE TO MALE CONNECTION



SAFE INSTALLATION USING INSTALLATION TOOL

