

INTENDED USE

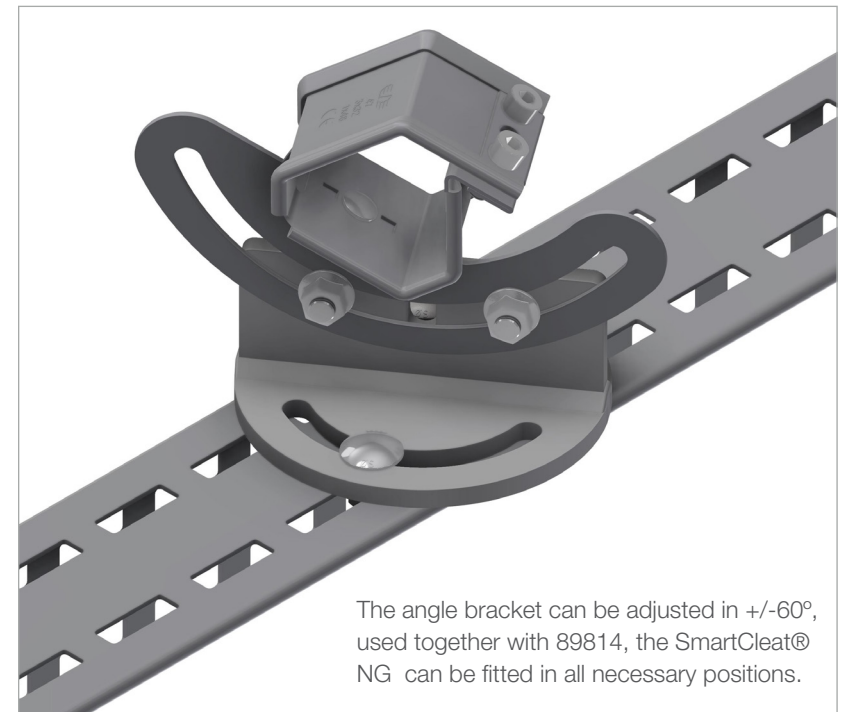
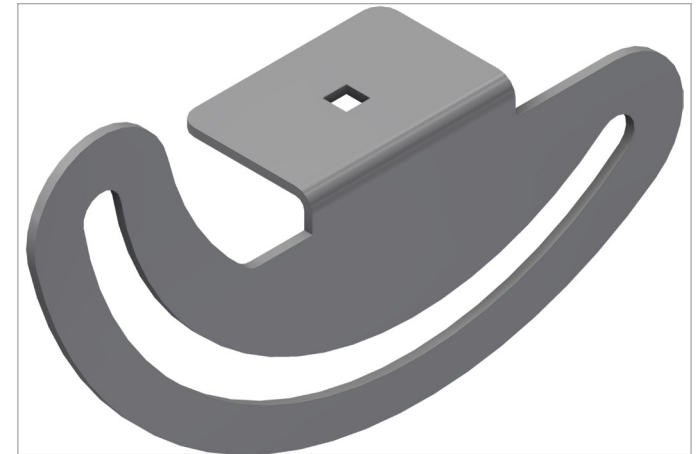
Rotational angle bracket for SmartCleat® NG up to 3x61 mm. Designed to be used with 89814 rotational bracket. The combined adjustability of the two brackets allows for Array cables to be fitted in all necessary positions.

INSTRUCTION FOR USE

Fit the SmartCleat® NG to the angle bracket using M6 self locking bolts. Tighten the M6 nut to 8-10 Nm.

Fit the angle bracket loosely to "89814" using M10 bolts. Adjust to desired position and tighten securely.

For recommended torque use following QR Code.



User Guide for Bolts:
Recommended Torque