

INTENDED USE

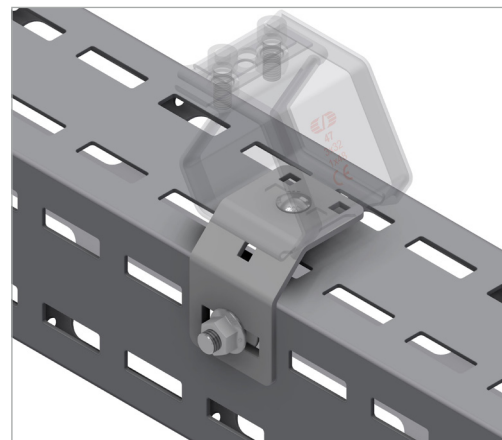
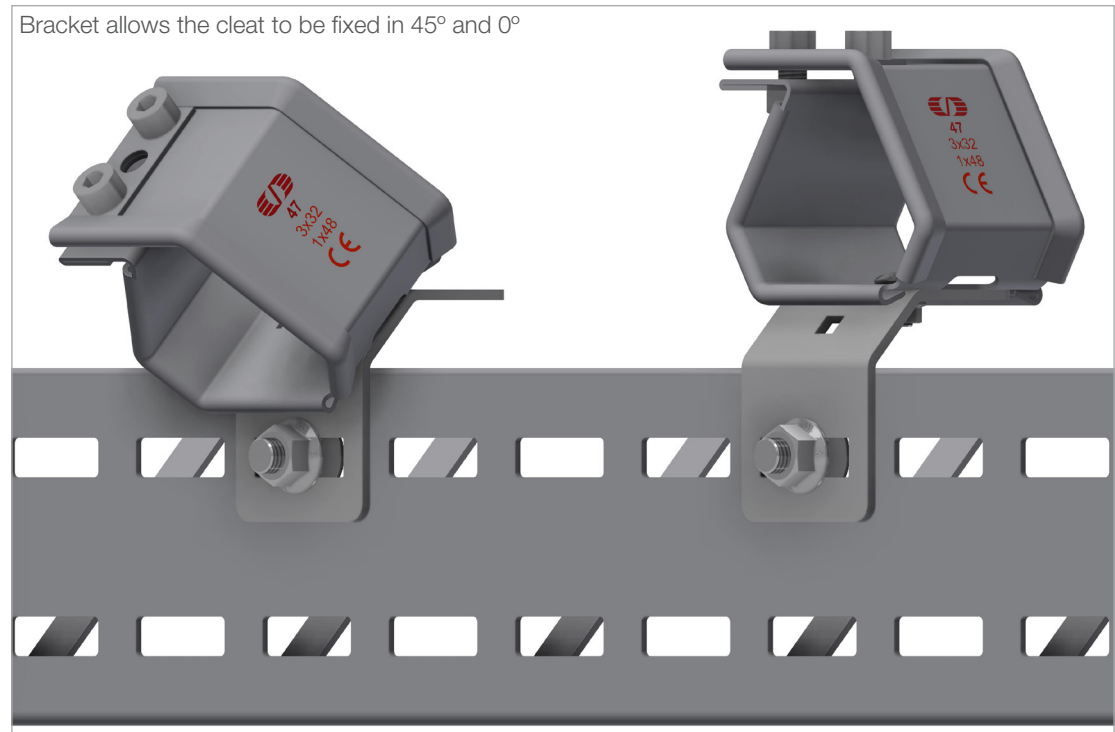
Bracket for SmartClea® NG, with two possible installation positions at 0° and 45°. Designed for single core cable cleats, especially for Array and other cables for the Wind Industry.

INSTRUCTION FOR USE

Fix SmartClea® NG to bracket in desired position using M6x12 bolt. Tighten the M6 nut to 8-10 Nm.

Fit bracket loosely to channel using M10 self-locking bolts, adjust and tightening securely. For recommended torque use following QR Code.

Bracket allows the cleat to be fixed in 45° and 0°



User Guide for Bolts:
Recommended Torque