

INTENDED USE

The multipurpose bracket CH50 is engineered to enhance structural integrity and offer flexibility in channel positioning. It can be used as a stiffener to reinforce the channel and increase overall strength, particularly at critical locations such as connection points or directly beneath applied loads.

In addition, the multipurpose bracket can function as a pivot connector, allowing angular adjustment of horizontal channels. It may also be used to reinforce the channel when additional holes are drilled between existing holes, ensuring structural stability is maintained despite channel modifications.

INSTRUCTION FOR USE

For H-type support:

1. Slot the brackets into the CH50 channel.
2. Ensure the brackets are accurately aligned with the horizontal channel at the specified installation point.
3. Tighten all the bolts to the recommended torque to get a reliable connection.
4. Inspect the assembly to ensure stability and proper alignment.

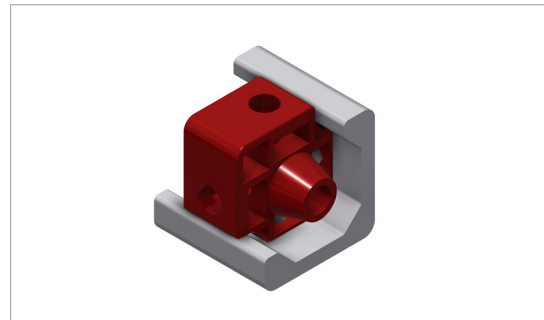
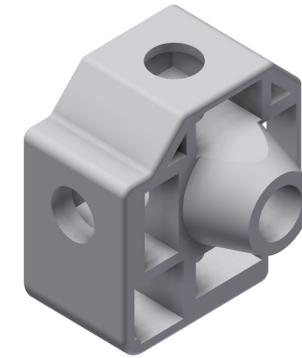
For angular type of support:

1. Slot the brackets into the CH50 channels.
2. Fix the brackets to the horizontal channel.
3. Utilize the necked hole as the pivot reference point during assembly to the vertical channel.
4. Adjust the orientation at the required angle.
5. Tighten all the bolts to the recommended torque to get reliable connection.
6. Inspect the assembly to ensure stability and proper alignment.

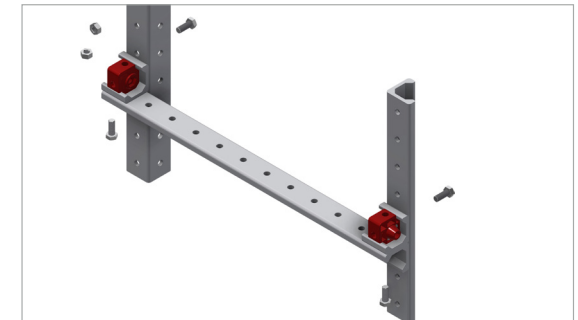


User Guide for Bolts:
Recommended Torque

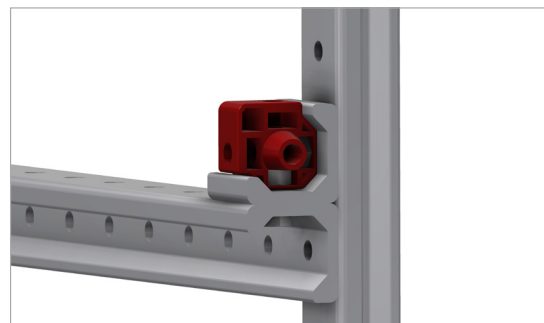
128829: Multipurpose bracket CH50



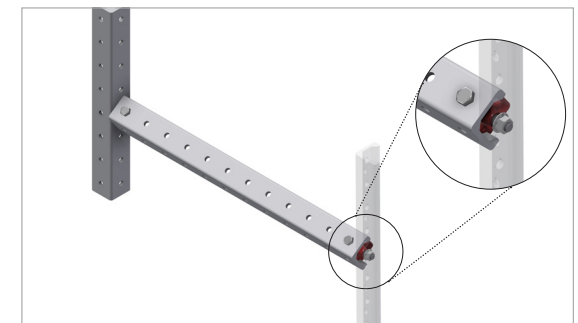
1. Slot the multipurpose brackets inside angle bracket (180121)



2. Align the brackets with the horizontal channel on the desired position.



3. Fix the brackets and the horizontal channel against the vertical channels at the chosen location.



4. For angular support, fixed both end with M10X70.