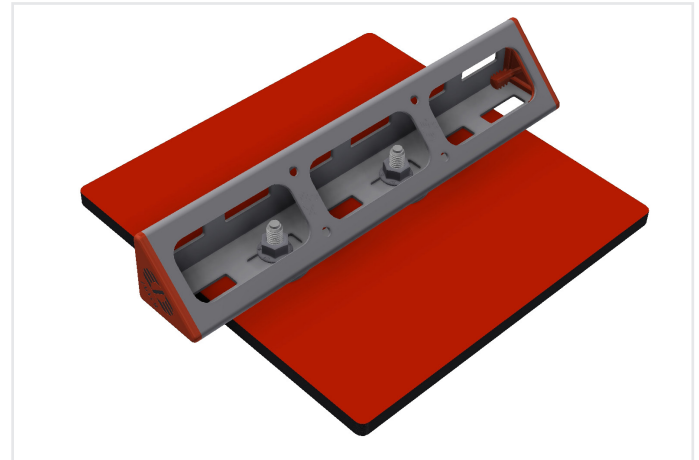
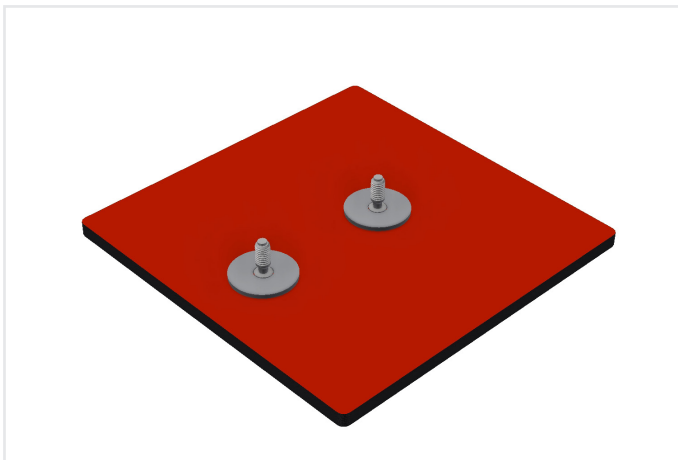


# ØS-Hilti Calculation data for Mekano® 50-2T Channel fitted with Hilti S-BT

ØI-RD-CB-EN-0026

Article	Description	Material	Thickness (mm)	Application	Fixing Bolt(s)
1372182	Channel S-M CH50-2T2-3000	SS	2	Light starter bracket for Mekano® 50-2T Channels	2

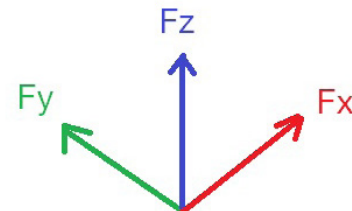
## PRODUCT AND APPLICATION



## INTERACTIONS

$$\frac{F_{zEk}}{F_{zRk}} + \frac{F_{xEk}}{F_{xRk}} + \frac{F_{yEk}}{F_{yRk}} \leq 1$$

## ORIENTATION



FIT	+/-Fz,Rk [kN]	+/-Fx,Rk [kN]	+/-Fy,Rk [kN]
Form lock	3.60	1.60	1.60
Friction lock	3.60	1.60	1.60

## ADDITIONAL INFORMATION

Form lock refers to a bolt set up that do not depend on friction to secure the channel to the starter bracket.  
Friction lock refers to a bolt set up that depends on friction to secure the channel to the starter bracket.

The data results shown above are calculated set up with form lock and friction lock.

Distance between bolts should be at least 50 mm, and in 50mm increments.

The calculated loadings shown include a safety factor and are the recommended maximum loadings for the combination of the part(s) and the fixing(s) shown for typical applications. Certain scenarios may allow for higher loadings to be considered.

We recommend to use a calibrated torque tool to ensure correct torque on the connection.

Bolts: Hilti S-BT-MR-M10/15 SN6

Scan QR code for fitting instructions for S-BT

