

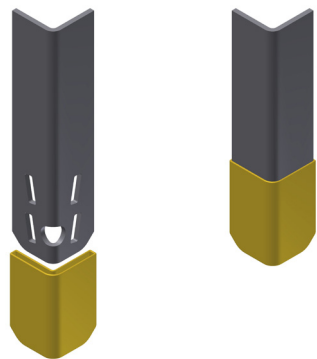
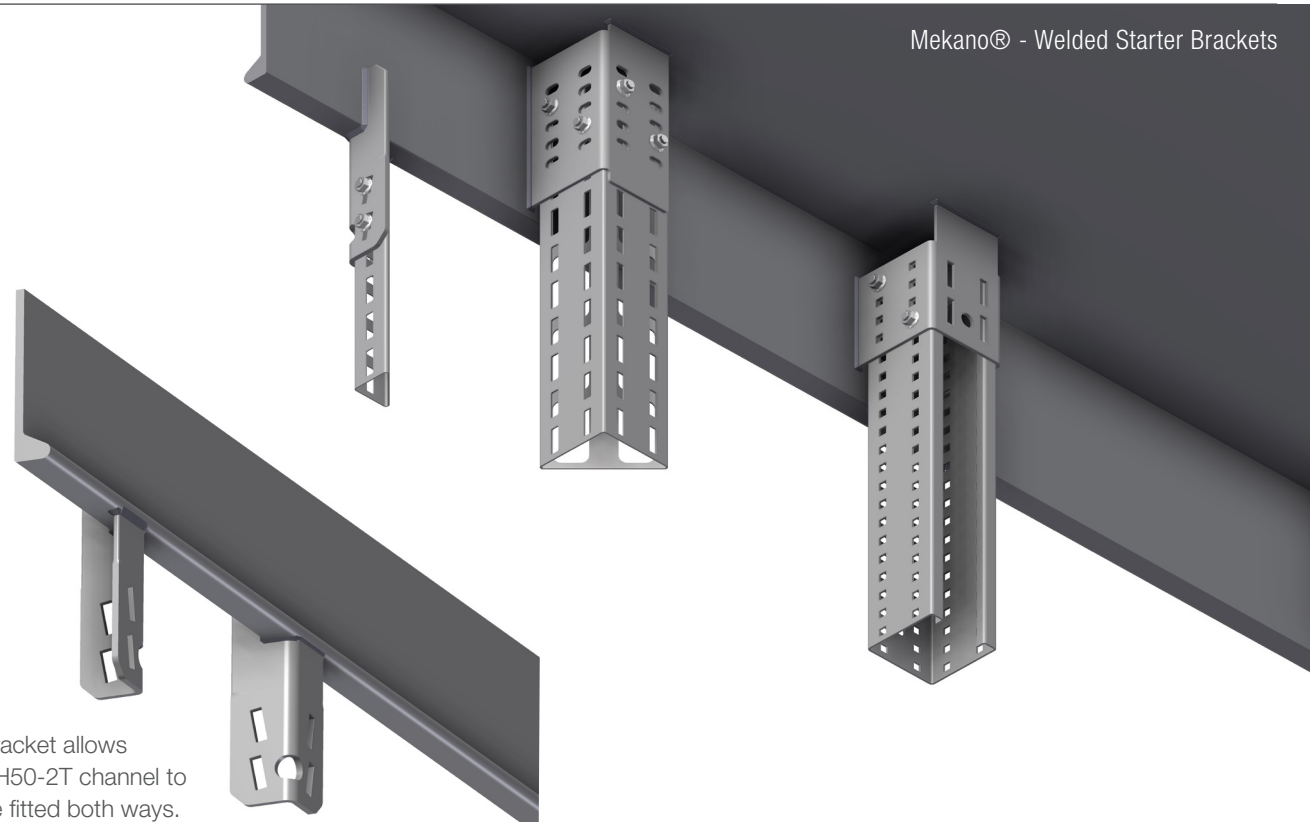
INTENDED USE

Welded brackets for supporting Mekano® channels from stringers.

INSTRUCTION FOR USE

Measure and mark the position of the stringer brackets. Please ask for our Best Practice Manual for typical grid solutions. Weld, clean and protect.

For selected AISI 316L stainless steel brackets, we can offer plastic masking covers. When using these the weld and lower 50 mm of the bracket can be sandblasted and painted, whilst the masked area offers good grounding when the masking is removed.



Plastic masking sleeves for easy masking for sand blasting and painting. Leaves a clean earthing surface.

