

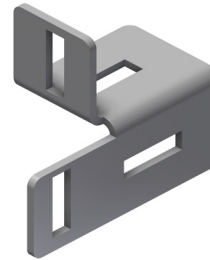
INTENDED USE

Bracket allowing Mekano® CH50-2T horizontal channel to be fitted flush with vertical support. The brackets increase lateral stiffness and can also be used to prevent collision where back-to-back fitting isn't possible. Available in separate left & right hand variants.

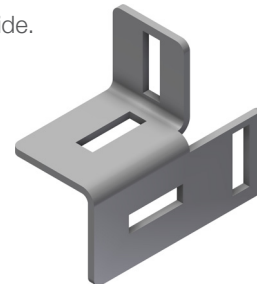
INSTRUCTION FOR USE

Bolt loosely in place using M10 self locking bolts (not included). Adjust and tighten securely.

Left Hand side.



Right Hand side.



Standard back-to-back channel fitting.



Horizontal & vertical channels are fitted flush.



User Guide for Bolts:
Recommended Torque