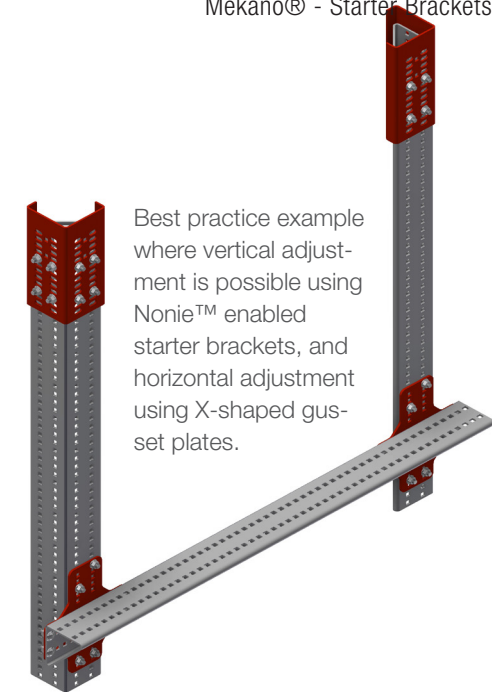
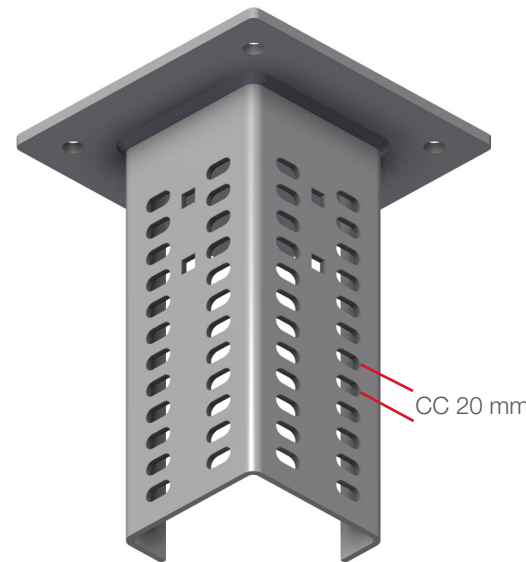


INTENDED USE

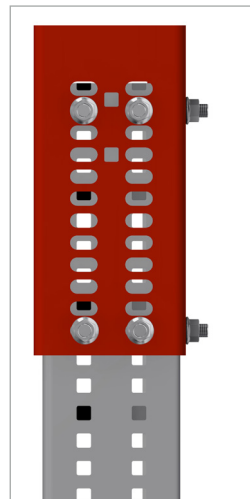
Welded brackets with Nonie™ adjustment allow for 5 mm increments in height adjustment by utilising CC 20 mm holes on the starter bracket. The example below shows the adjustment possibilities for one type of starter, however the principle is the same for all Nonie™ enabled starter brackets.

INSTRUCTION FOR USE

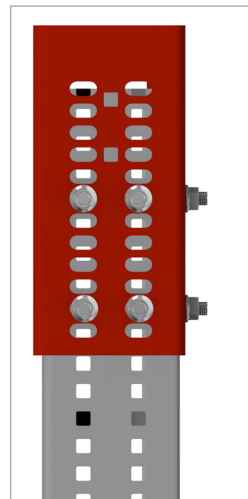
Attach the channel to the starters using self locking bolts in the position required. Adjust and tighten securely.



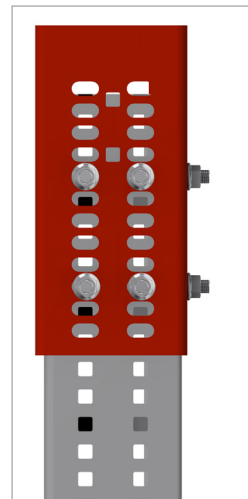
Nonie™ 0 mm offset.



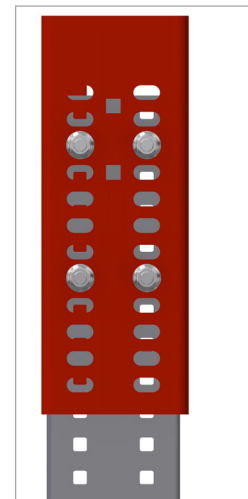
Nonie™ 5 mm offset.



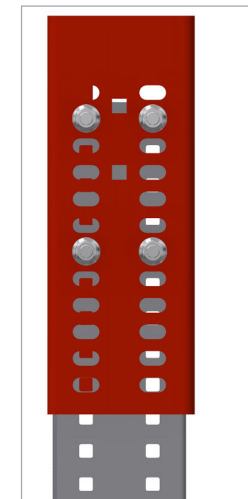
Nonie™ 10 mm offset.



Nonie™ 15 mm offset.



Nonie™ 20 mm offset.



Nonie™ 25 mm offset.

