

INTENDED USE

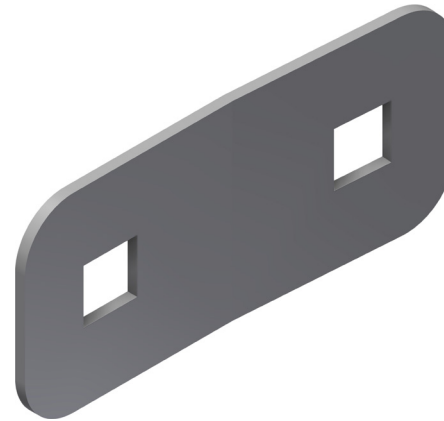
Washer with two 11 mm holes for distributing loadings and stress in bolted connections with heavy or concentrated loads.

INSTRUCTION FOR USE

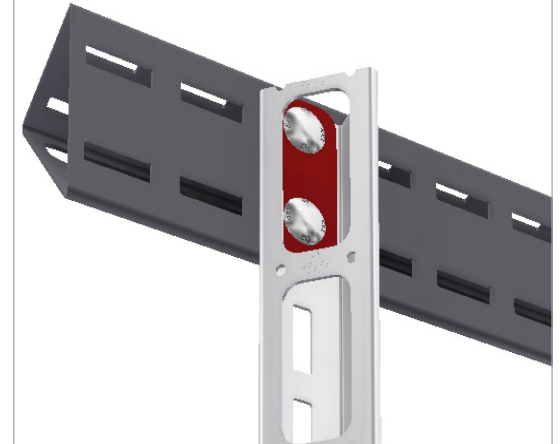
Fit the washer in place inside the Mekano® channel during normal installation.

The washer has a manufacturing spring bend, and can be fitted in either direction.

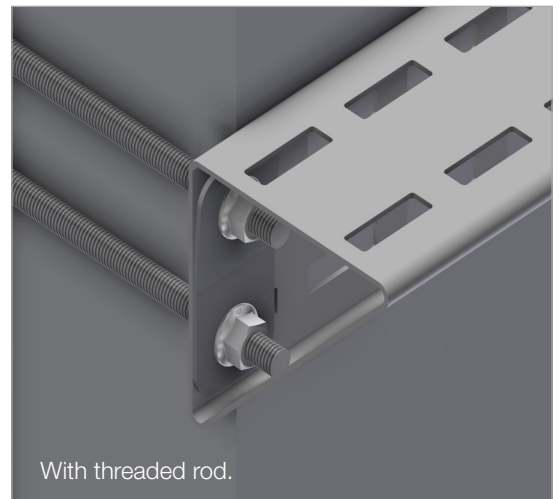
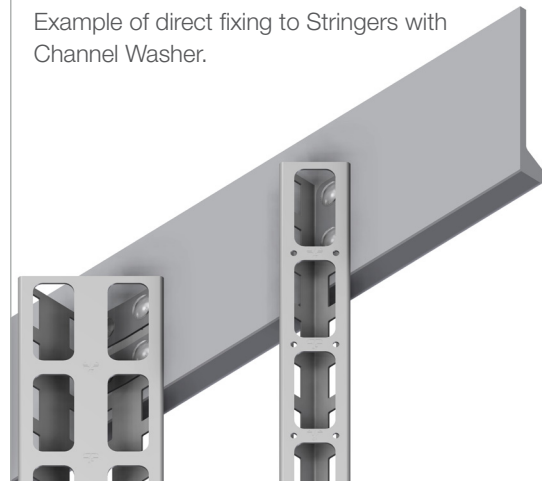
Channel Washer.



For heavy load distribution.



Example of direct fixing to Stringers with Channel Washer.



With threaded rod.



User Guide for Bolts:
Recommended Torque