

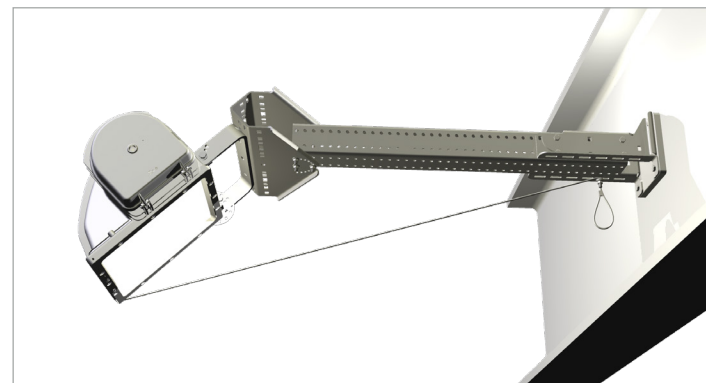
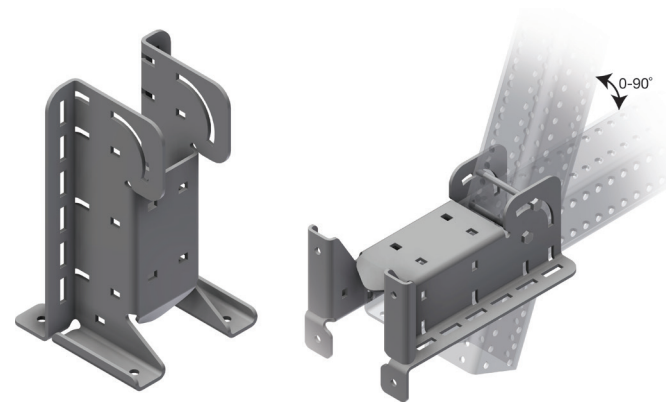
INTENDED USE

Starter bracket designed for floodlight support to give adjustable angle support, and to allow the pole to be easily raised or lowered for service of the light without dismantling the assembly. Suitable for vertical and horizontal use.

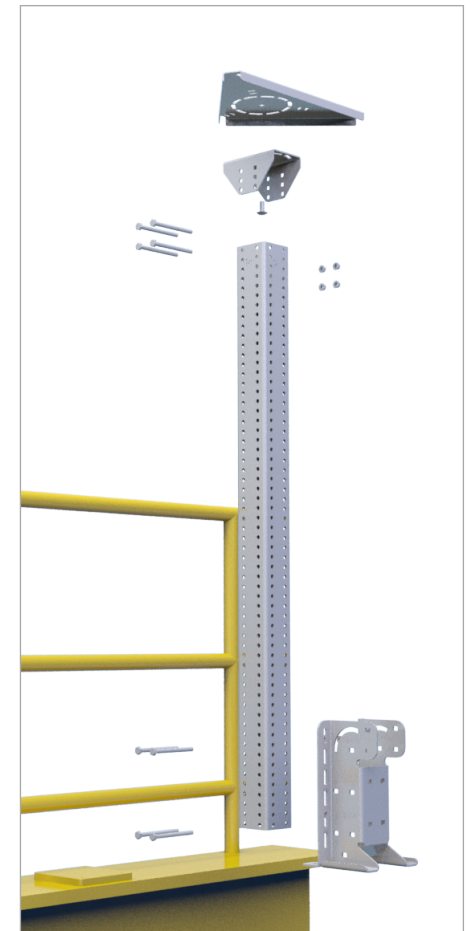
INSTRUCTION FOR USE

The starter can be bolted to threaded doubling plates with M10 bolts (bolt CC 150 mm) which are first welded to the structure.

Floodlight poles can then be created using Mekano® CH100-4 channel and a Floodlight support bracket from our wide range.



Horizontal installation example with safety wire tensioned to provide support, and which can be released to raise the light for service.



Typical vertical installation with Rotation bracket and floodlight support bracket.



User Guide for Bolts:
Recommended Torque