

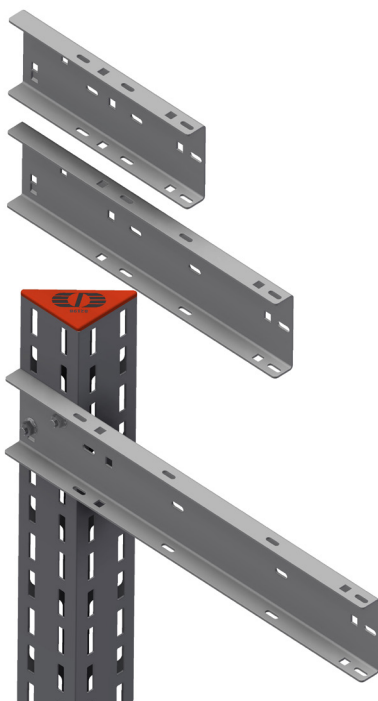
INTENDED USE

Cantilever arms for attaching to Mekano® support channels. Arms in SS have notches to give a locked connection using 2 bolts. HDG are without notches, and should be fitted with 4 bolts. With 7x20 and 11x11 mm holes for fixing cable tray, cable ladder and threaded rod hangers.

INSTRUCTION FOR USE

Bolt loosely in place ensuring the notches (SS) are engaged in the channel. Fix with M10 self locking bolts supplied. Adjust and tighten securely.

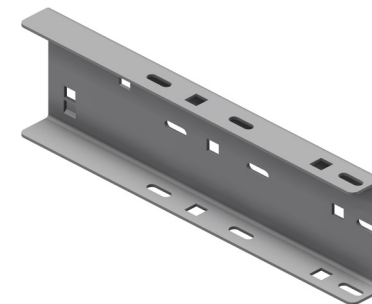
Channel Bracket OE/SPB for SS - 2 bolts, 2 notch connection.



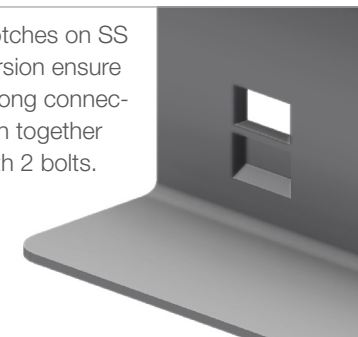
Channel Bracket OE/SPB for HDG - 4 bolt connection.



Available in lengths to suit cable tray/ladder 150, 300 and 450 mm wide.



Notches on SS version ensure strong connection together with 2 bolts.



User Guide for Bolts:
Recommended Torque