

INTENDED USE

Standard length ceiling bracket for supporting central support arms.

Available in lengths:

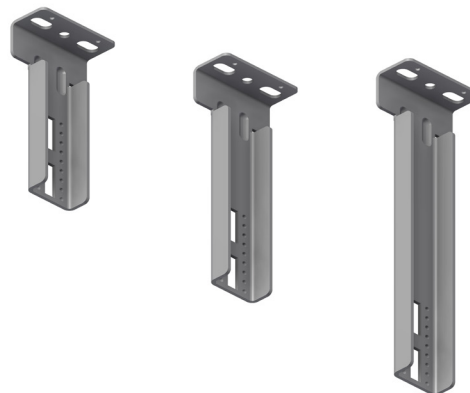
172 mm, 222 mm and 300 mm

INSTRUCTION FOR USE

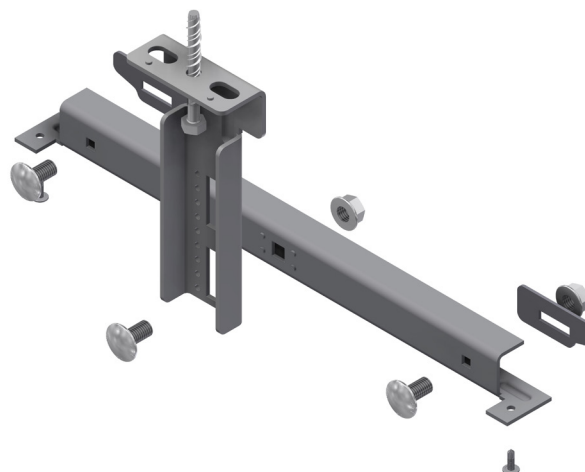
Fix the ceiling bracket to steel constructions with M10 bolts (not supplied). Can also be fixed to concrete ceilings using expanding bolts.

The central arm can then be bolted directly to the bottom of the support

Central Channel bracket is available in 3 standard lengths



Can be fixed directly to concrete.



User Guide for Bolts:
Recommended Torque