

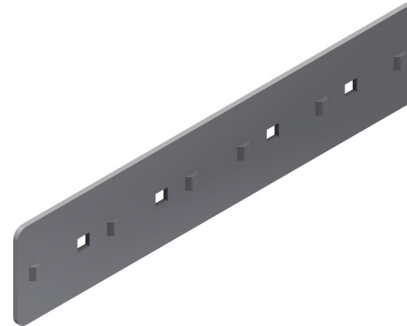
## INTENDED USE

LOE Splice connectors with notches are used to connect sections which do not have integral splice connections. Splice connectors in SS have notches which fit into the slots in the side rail to prevent deflection.

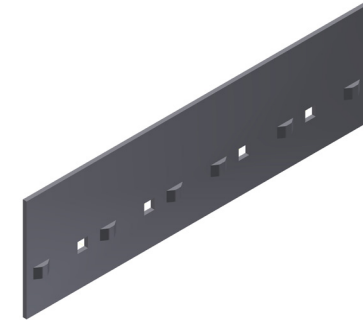
## INSTRUCTION FOR USE

Attach the Splice loosely with M6 bolts supplied. Adjust, then tighten securely.

LOE55 Type,  
2 x fasteners included.



LOE75 Type,  
4 x fasteners included.



User Guide for Bolts:  
Recommended Torque