

## INTENDED USE

Bracket for fixing LOE Ladders to walls or ceilings.

## INSTRUCTION FOR USE

Attach the bracket to the wall depending on the material. If using expanding bolts, follow the manufacturers instructions.

Fix the LOE Cable Ladder flush or at a distance using the slotted holes on the bracket.

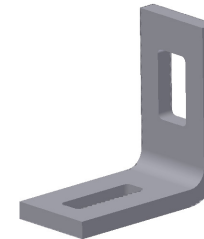
Adjust all and tighten securely.

Oglaend Systems have a range of alternative brackets. Please contact us for details.

LOE wall distance bracket. Holds LOE55/75 20-35 mm from wall.



Universal bracket with M6/M10 holes for wall fixing. Suitable also for Concrete insert rail.



Alternative universal bracket for wall or ceiling fixing LOE100.



User Guide for Bolts:  
Recommended Torque