

INTENDED USE

Covers for OE ladder straight lengths and fittings offer protection from falling objects, UV radiation from sunlight and give the cables basic protection from weather and vandalism. Covers are supplied flat or peaked according to the size.

Additional clamping required for high wind loading.
See ØI-RD-UG-EN-0024 (Hurricane clamps).

INSTRUCTION FOR USE

Covers can be fitted using proprietary cover clamps. Allow 6 clamps for each 3 m section for widths up to 450 mm. From 600 mm width, allow 4 clamps per 1,5 m section.

- Attach the clamp bolts loosely.
- Attach clamp and tighten with self locking bolts.
- Bends and other fittings have holes for bolting directly onto the ladder rail.

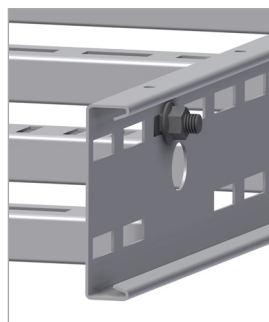
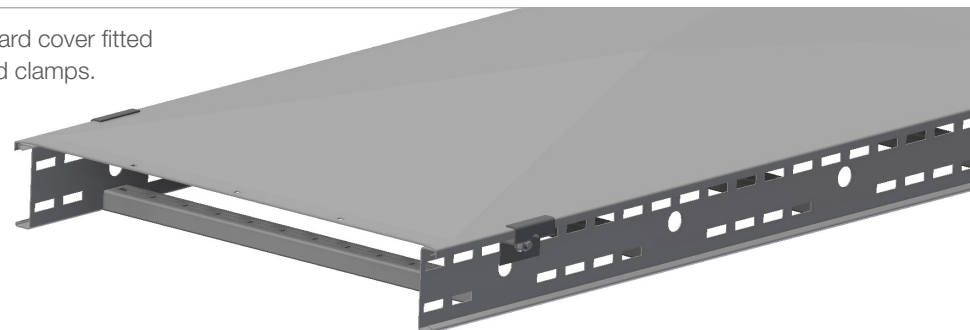
Width > 600 mm: Use connector brackets in addition to standard clamps for widths > 600 mm.

- Fit the bolts and screw in place with a nut before fitting the covers on the ladder.
- Attach the connector with the nuts and tighten securely.

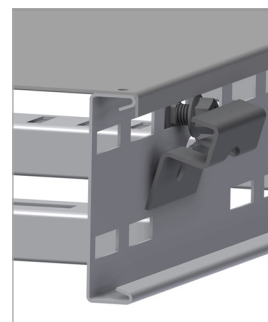


User Guide for Bolts:
Recommended Torque

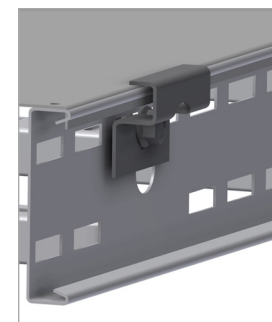
Peaked standard cover fitted using standard clamps.



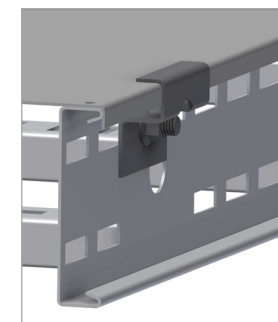
Fix clamp bolt to side rails.



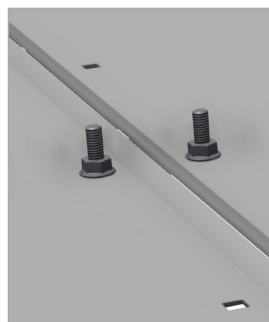
Attach clamp.



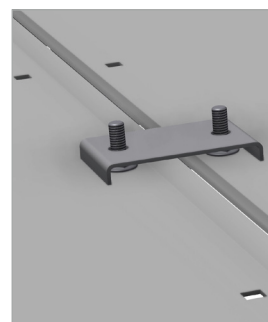
Clip over top.



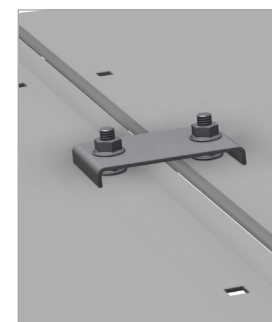
Tighten securely.



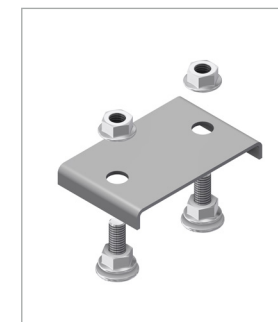
Fit bolts with 1 nut to cover.



Attach connector plate.



Tighten connector with nut.



2 bolts, 4 nuts, 1 Connector.