

INTENDED USE

The cover clamp is used to fasten ladder or tray covers tightly to the side rails. Suitable for both horizontal and vertical applications.

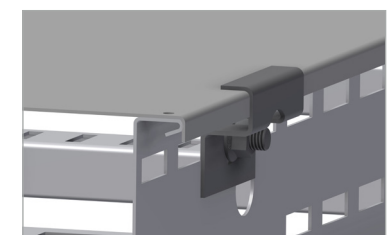
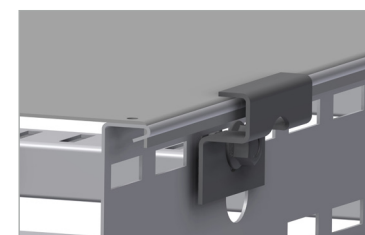
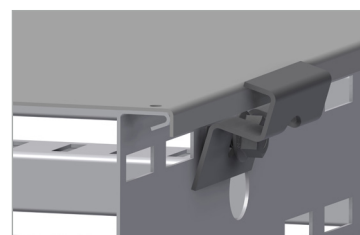
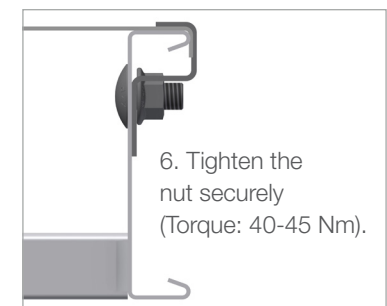
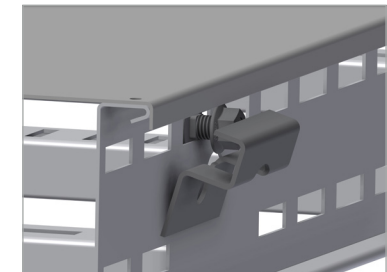
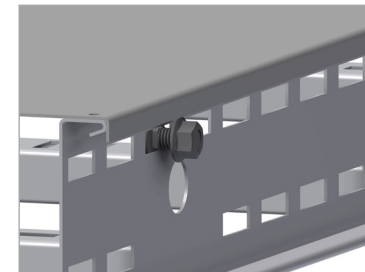
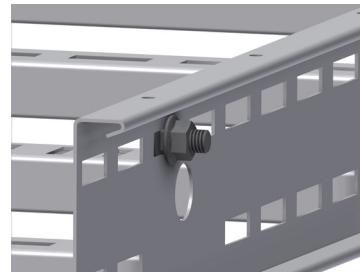
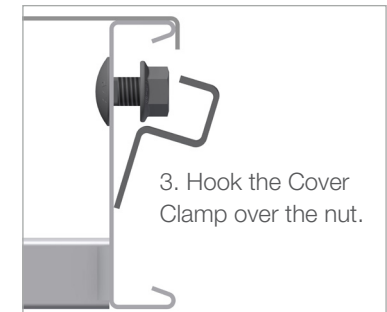
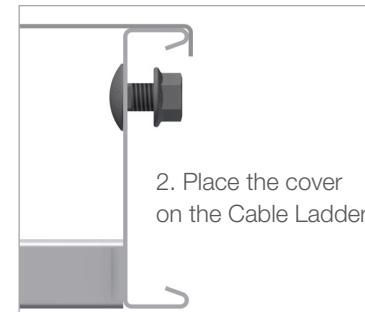
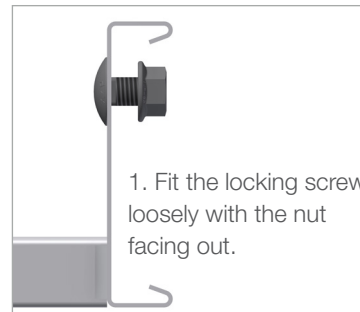
For vertical fitting, additional cover fasteners are required, see ØI-RD-UG-EN-0023.

Additional clamping required for high wind loading. See ØI-RD-UG-EN-0024 (Hurricane clamps).

INSTRUCTION FOR USE

Allow 6 clamps for each 3 m section for widths up to 450 mm. From 600 mm width, allow 4 clamps per 1.5 m section.

1. Attach the bolt loosely on the rail with the nut facing out.
2. Place the cover on the tray or ladder.
3. Hook the cover clamp over the nut.
4. The cover clamp is supported by the bolt.
5. Adjust the cover clamp to be flat on the cover top.
6. Tighten the self locking bolts securely to 40-45 Nm.



User Guide for Bolts:
Recommended Torque