

INTENDED USE

Tee-Piece with two levels for assembly on site. These brackets can be used to form the Tee above or below the original level.

OE100 A-VE are only suitable for OE100 cable ladders.

INSTRUCTION FOR USE

Type OE100 SA-VE should be folded on the vertical divide. Fold one bracket each way to make a pair (one right, one left).

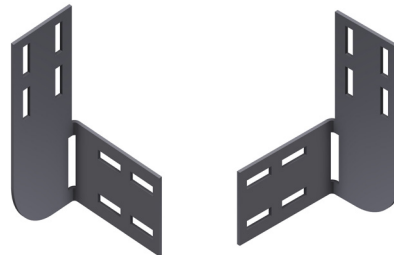
Type S-M SC-TW 40/290 and 390 come ready to assemble.

Attach the parts together loosely using self locking bolts. Adjust all parts, and tighten securely.

OE100 SA-VE FLAT



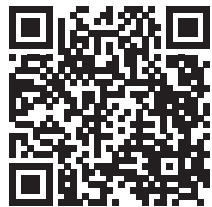
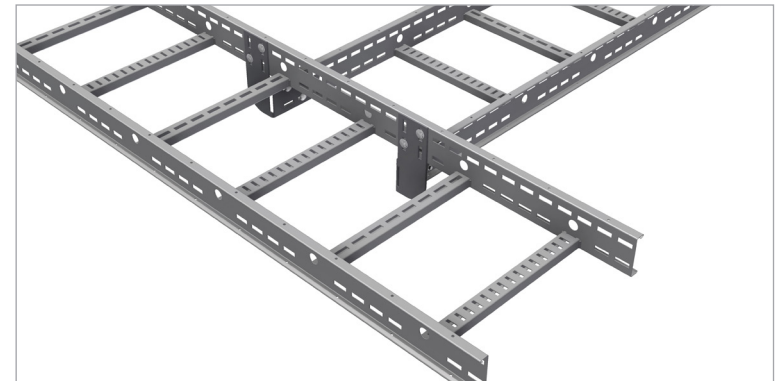
OE100 SA-VE FOLDED AS A PAIR



S-M SC-TW
40/390



S-M SC-TW
40/290



User Guide for Bolts:
Recommended Torque