

INTENDED USE

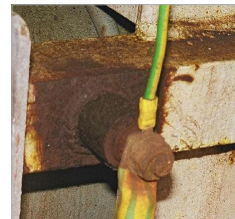
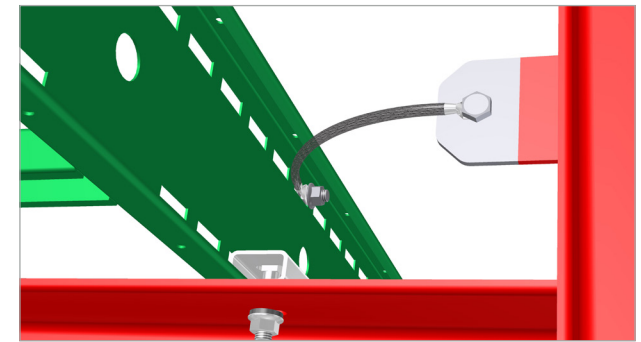
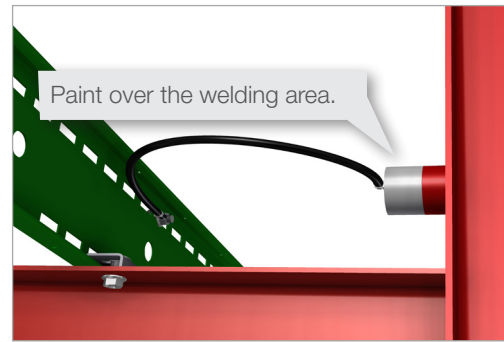
Straps to ground the support sections to the structure, and to ground between ladders when using movable splices.

INSTRUCTION FOR USE

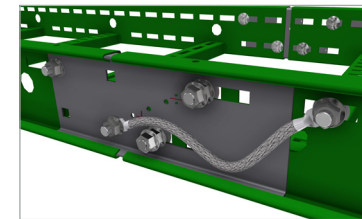
The straps are fitted using the corresponding bolts according to the strap rating. To avoid corrosion of the earth links, we recommend welding a stainless steel boss to the support structure. Clean and paint over the welded area.

ALTERNATIVE SOLUTION

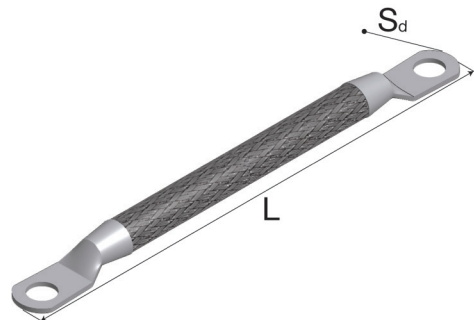
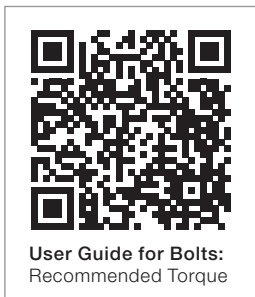
Good earthing is obtained by using welded starter brackets on the structure rather than using welding bosses and straps. We also recommend using our Multigrid® system in order to improve electromagnetic compatibility (EMC), as earth link straps are a typical source of electromagnetic interference. Ask us for more details.



Don't let this happen:
Use a stainless steel grounding lug to prevent a potential corrosion problem.



Movable Splices:
Earth link strap used to ensure conductivity over an expansion splice connector.



Type	Part Number	Cross Section (mm ²)	Dimension (mm)	Current Rating Amps	Length L (mm)	Screw dimension
A-M EL-100/6-4	standard	4	10 x 2	45	100	M6
A-M EL-100/6-6	standard	7.8	10 x 2	63	100	M6
A-M EL-200/6-6	on request	7.8	10 x 2	63	200	M6
A-M EL-300/6-6	on request	7.8	10 x 2	63	300	M6
A-M EL-100/10-10	standard	10	12 x 2	90	100	M10
A-M EL-200/10-10	on request	10	12 x 2	90	200	M10
A-M EL-300/10-10	standard	10	12 x 2	90	300	M10
A-M EL-100/10-16	standard	16	19 x 2.5	120	100	M10
A-M EL-200/10-16	on request	16	19 x 2.5	120	200	M10
A-M EL-300/10-16	standard	16	19 x 2.5	120	300	M10
A-M EL-100/10-25	on request	25	25 x 3	150	100	M10
A-M EL-200/10-25	on request	25	25 x 3	150	200	M10
A-M EL-400/10-25	on request	25	25 x 3	150	400	M10
A-M EL-200/10-35	on request	35	25 x 3.5	200	200	M10
A-M EL-300/10-35	on request	35	25 x 3.5	200	300	M10
A-M EL-400/10-35	on request	35	25 x 3.5	200	400	M10
A-M EL-200/10-50	on request	50	30 x 4.5	250	200	M10
A-M EL-400/10-50	on request	50	30 x 4.5	250	400	M10
A-M EL-200/10-75	on request	75	32 x 5	300	200	M10
A-M EL-400/10-75	on request	75	32 x 5	300	400	M10