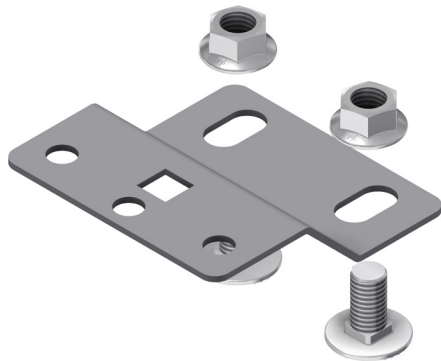


INTENDED USE

Fixed bracket for fixing light armatures types Glamox/CEAG to Mekano® CH100-2T.
Compatible with OE100 ladder side rails.
Also compatible with stretch preventors.

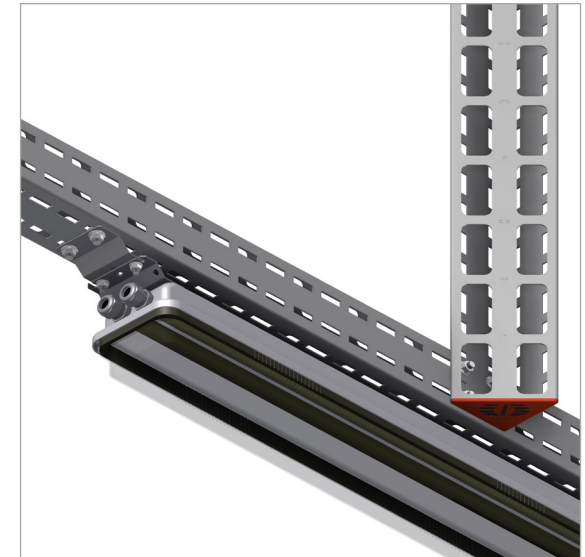
INSTRUCTION FOR USE

Attach the bracket (and stretch preventor if applicable) to the armature brackets securely with self locking bolts. Lift the armature in place and screw onto the support. Tighten securely with self locking bolts.



User Guide for Bolts:
Recommended Torque

CEAG / Stahl fitted to CH100-2T2.



Glamox fitted to Mekano® CH100-1/OE100 Ladder rail.

