

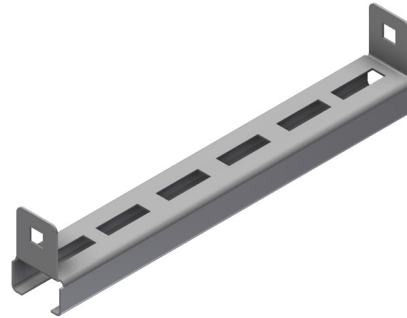
## INTENDED USE

Additional OE rungs have many applications as support brackets for Lighting, Tubing Clamps, Cable Cleats, Flexi Risers and for reduced CC depending on application.

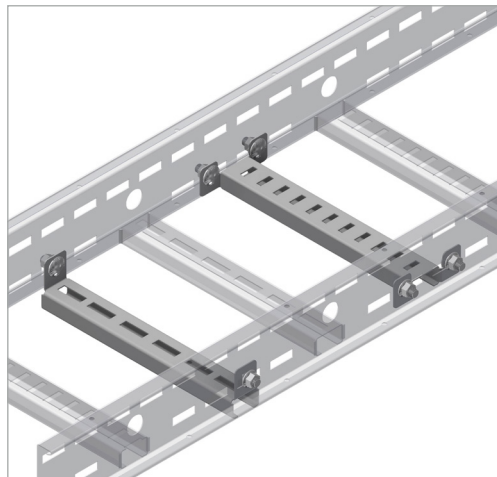
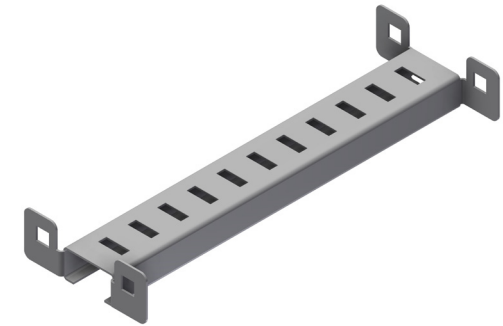
## INSTRUCTION FOR USE

Attach the rung loosely with self locking bolts, adjust and tighten securely.

**Lateral slots:** Rung is fitted below the level of the ladder rungs. Single fixings on each side allows it to be rotated to support cable exit.



**Longitudinal slots:** Rung is fitted at the same level as the ladder rungs. Two fixings on each side offer good stability.



**Lateral slots:** Rung is fitted below the level of the ladder rungs.



**Typical application:** Extra rung to support cable on transition to flexi-riser. Single fixing enables the rung to be rotated to the ideal angle to support the cable.



**Typical application:** Extra rung added to suit light armature brackets.



User Guide for Bolts:  
Recommended Torque