

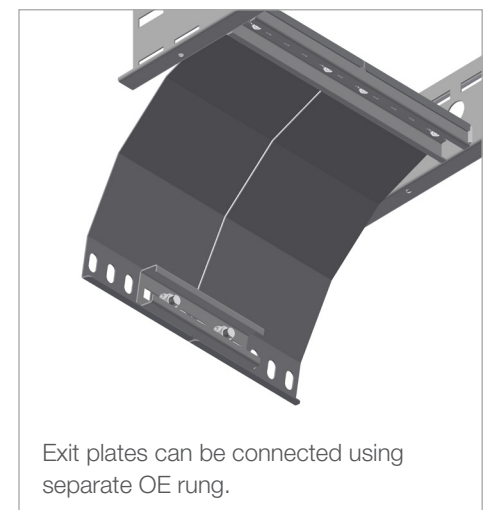
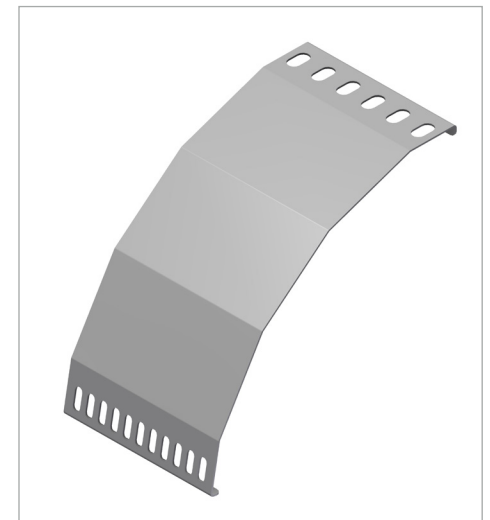
INTENDED USE

Exit plates used to support cables when exiting the ladder. The plates are supplied in nominal 150 mm modules to suit all ladder widths.

INSTRUCTION FOR USE

Attach the exit plate(s) to the rung at the exit point. Fix parts together loosely using self locking bolts Adjust and tighten securely.

When fixing several exit plates, these can be connected using an OE rung piece.



User Guide for Bolts:
Recommended Torque