

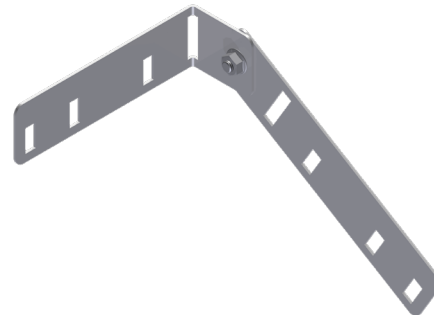
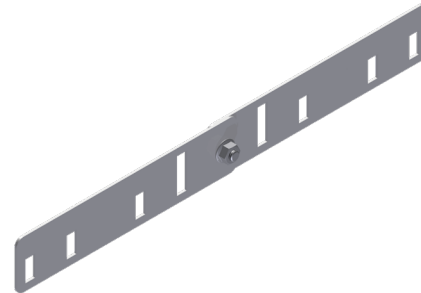
INTENDED USE

Hinge for vertical directional changes for SPB-RF. Can be used for straight direction changes, or for forming exits or junctions between trays of different height.

INSTRUCTION FOR USE

Fit the brackets to the cable tray loosely.
Tighten the bolts securely.

When using to exit from the side of a cable tray, the bracket can be bent as shown. The side rails on the cable trays can be cut with a fine wheel cutter (1 mm blade) or an exit plate can be added to give a clean transition. Attach all the parts loosely, adjust and tighten securely with self locking bolts.



User Guide for Bolts:
Recommended Torque