

INTENDED USE

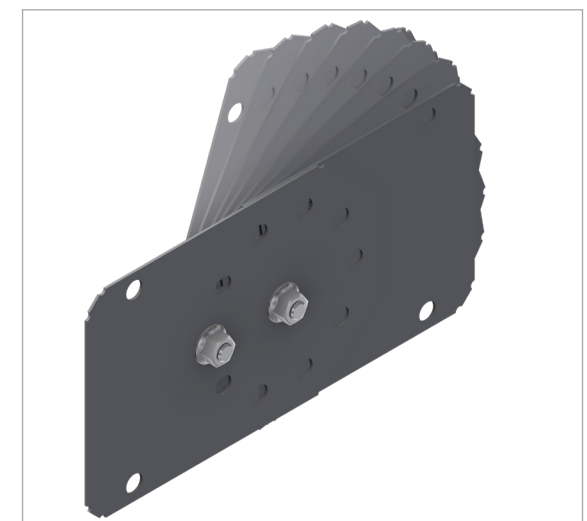
The hinge is used for elevation changes for FOE ladders. The design allows for 4° increments with SS version. FRP version can be adjusted to any angle needed.

INSTRUCTION FOR USE

Attach the hinge loosely to the siderail. Fit the centre hole to the hinge. Adjust the angle and add the second bolt in the available hole.

For the FRP hinge, friction is enough to lock the angle and a second bolt is not needed.

Tighten the self locking screws securely.



User Guide for Bolts:
Recommended Torque