

INTENDED USE

Adjustable Flexi Riser with integrated splice for vertical changes in direction. Can be used as both inside and outside riser.

See also SPB Combi Riser as alternative.

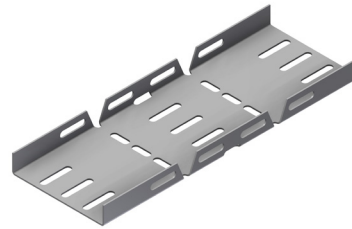
Bolt hole pattern and quantity of bolts supplied may vary depending on the height.

INSTRUCTION FOR USE

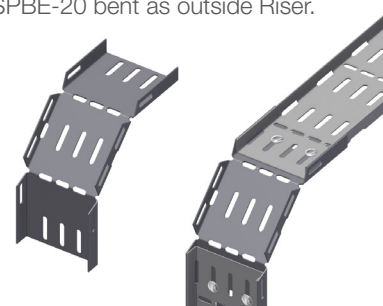
Bend the riser in the required angle. Attach loosely to the trays using self locking bolts. Adjust and tighten securely.

Use Riser Locks to stabilise the joint as required.

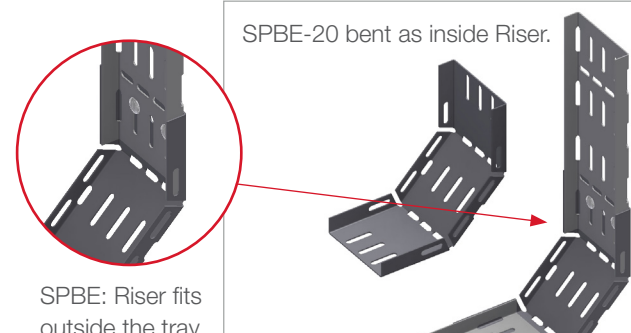
SPBE-20 before bending.



SPBE-20 bent as outside Riser.



SPBE-20 bent as inside Riser.



SPBE: Riser fits outside the tray.

SPB-RF 40



SPB-RF: Riser fits inside the tray.



User Guide for Bolts:
Recommended Torque