

## INTENDED USE

Exit Plates used to safely support cables over the side rail or ends of cable trays SPBE-40 or SPB-RF-40.

## INSTRUCTION FOR USE

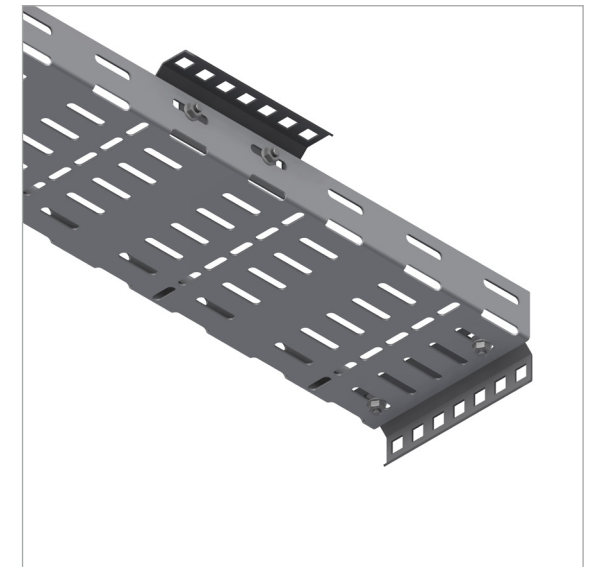
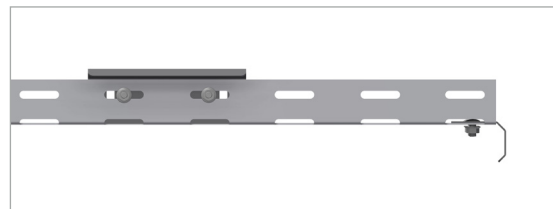
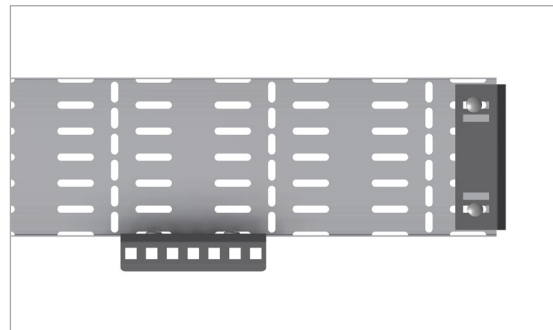
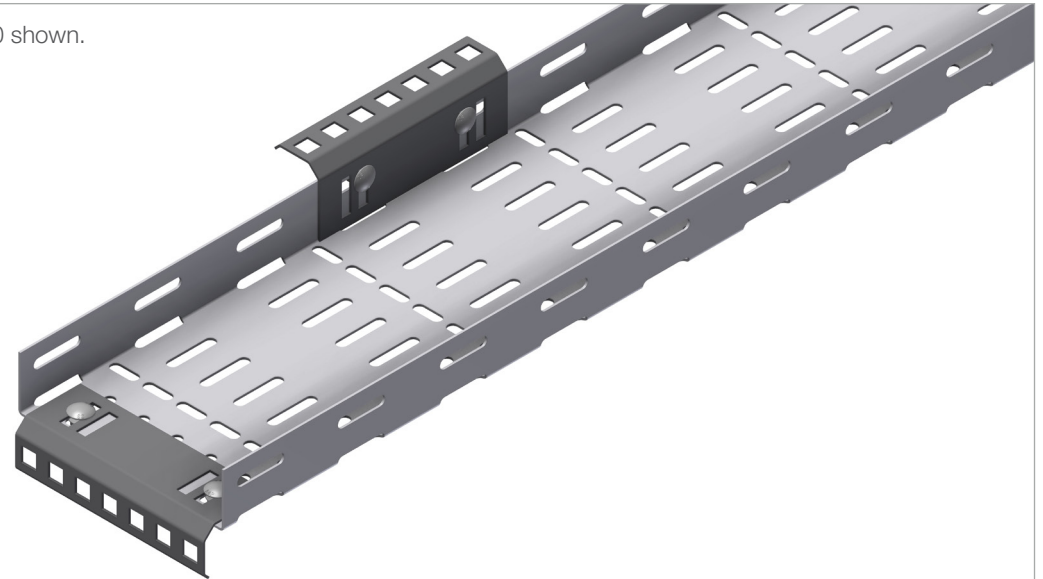
When fitting on the sides:

SPBE: Fit on inside of tray as shown.

SPB-RF: Fit on outside of tray.

Attach the Exit Plate(s) loosely in the desired locations using self lock bolts. Adjust and tighten securely.

SPBE-40 shown.



User Guide for Bolts:  
Recommended Torque