

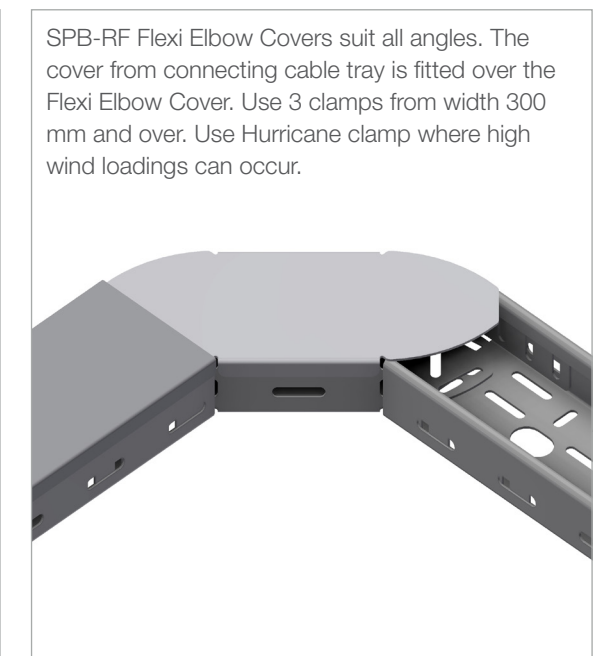
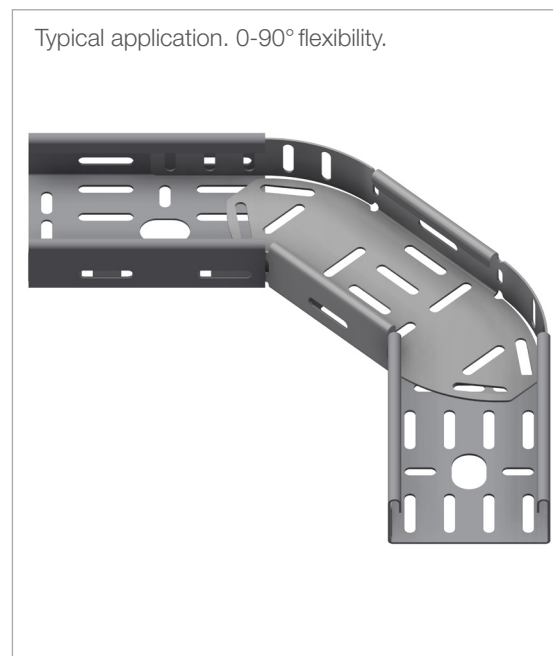
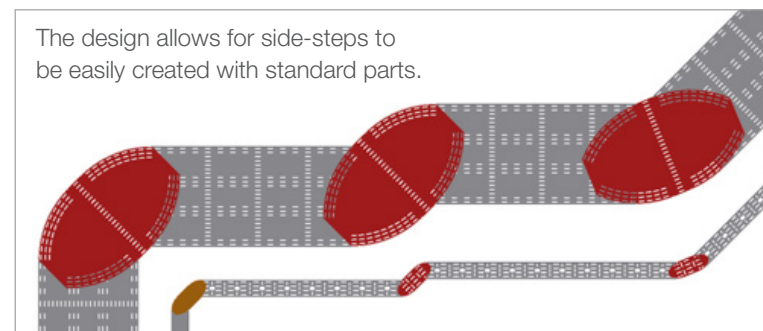
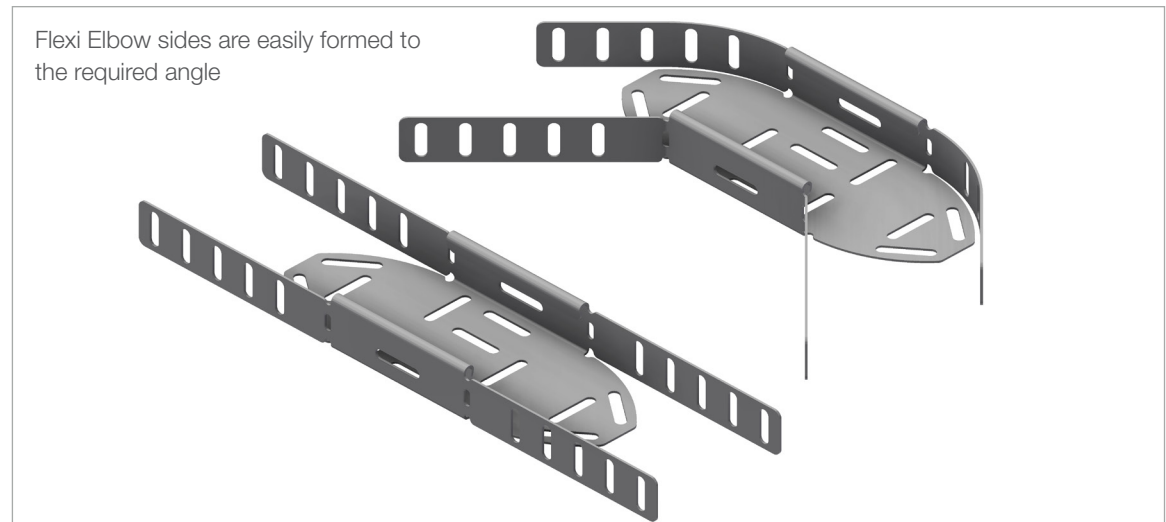
INTENDED USE

Adjustable Flexi Elbow for horizontal direction changes at any angle from 0-90°. Easily formed by hand.

INSTRUCTION FOR USE

Firstly, fit the inside splice with a self locking bolt. Bend the Flexi Elbow to the required angle(s). Fix the outside splice with a self locking bolt. Fix the base of the Flexi Elbow to the connecting cable tray with at least one self locking bolt each end.

Adjust and tighten securely.



User Guide for Bolts:
Recommended Torque