

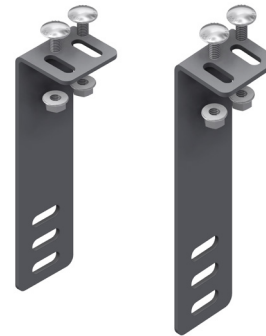
INTENDED USE

Stretch Preventer for fitting onto cable tray to prevent cables from being stretched and damaged during installation and operation. It is intended for fitting indoors.

The stretch preventer provides the required slack in cable (max 10 x diameter, and bending radius 6 x diameter).

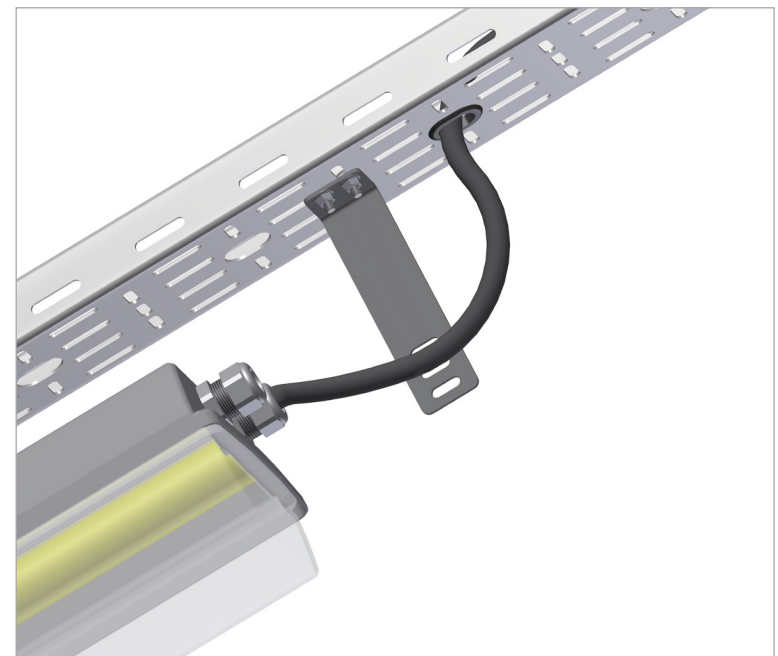
INSTRUCTION FOR USE

Attach the stretch preventer loosely with self locking bolts. Adjust and tighten securely.



KLS-SP
130 mm

LS-SP
150 mm



User Guide for Bolts:
Recommended Torque