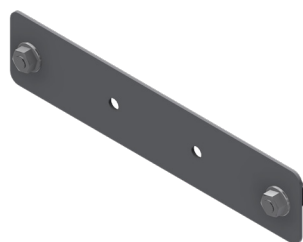
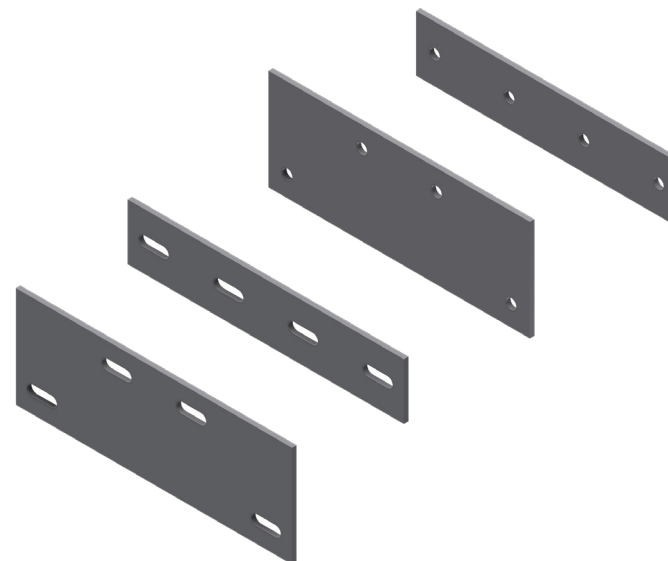


INTENDED USE

FTE splice connectors are used to connect sections of cable tray together. Splice connectors and fasteners are available in both FRP and SS materials.

INSTRUCTIONS FOR USE

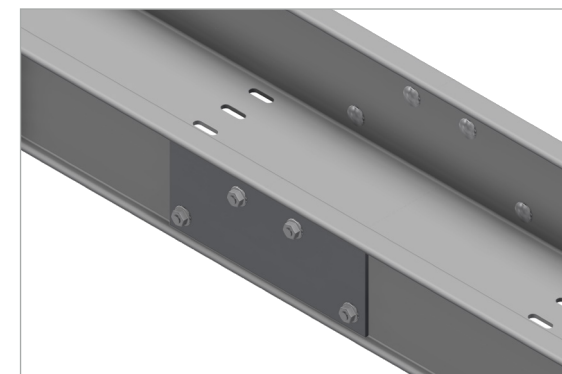
Attach the splice loosely with self locking bolts in the recommended pattern as shown. Adjust, then tighten securely.



FTE-50 Splice plates are provided with 2 M6x16 fasteners as standard, with the option to add 2 more, if needed.



FTE-80 Splice plates are provided with 4 M6x16 fasteners as standard.



For expansion couplers, place one coupler at approx 25 m intervals to mediate thermal expansion for temperature variations of ± 20 °C. Thermal expansion coefficient: 25×10^{-6} mm/mm °C.



User Guide for Bolts:
Recommended Torque