

INTENDED USE

Cover for straight lengths of FTE cable tray and fittings offer protection from falling objects, UV radiation from sunlight and give the contents basic protection from weather and vandalism.

INSTRUCTION FOR USE

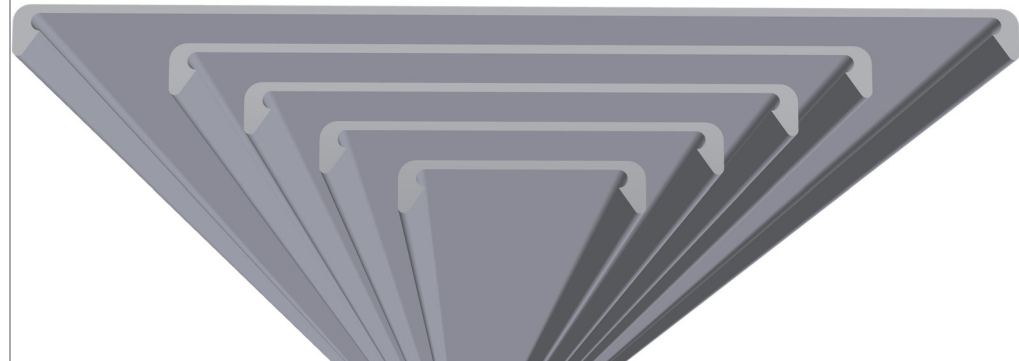
300 mm tray and below utilize a quick snap-on cover. Tray over 300 mm feature a flat cover, which requires fixing clamps to keep it in place.

The SS Cover Clip is made of SS316L material and it is used to provide additional wind load resistance on snap-on cover.

The heavy duty FTE cover clamp is constructed with FRP materials. Suitable for high wind applications and must always be used with flat covers to maintain structural integrity.

Important: Tray covers are not designed to be step on or be used for any unintended application.

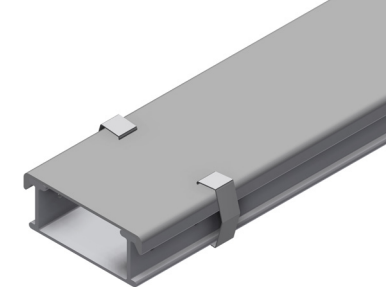
The snap-on cover is suitable for cable trays up to 300 mm width cable tray.



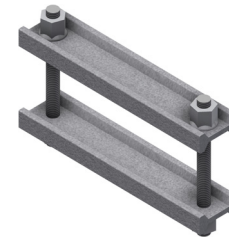
SS Cover Clip



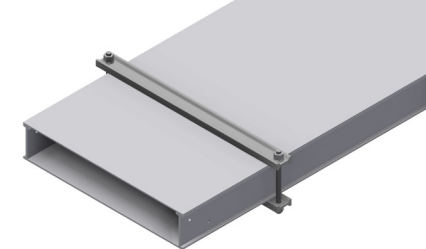
Snap on cover with SS Cover Clip



Heavy Duty FTE Cover Clamp



Flat cover with HD FTE Cover clamp



User Guide for Bolts:
Recommended Torque