

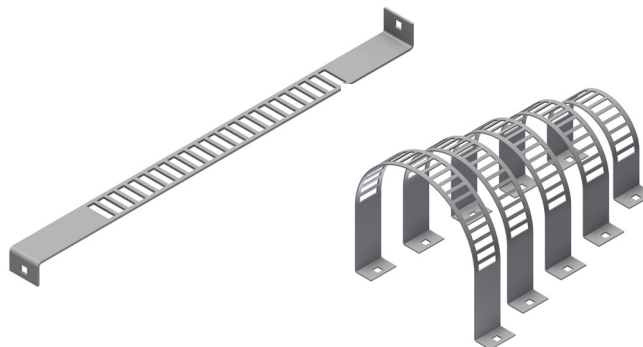
INTENDED USE

Light HVAC clamp for ducting or light non pressured piping, drains etc from 100-800 mm outside diameter. Suitable for fixing to standard cable trays, cable ladders or multidiscipline support systems. Supplied flat for ease of transport and storage. Space saving design with fixing feet both facing in same direction.

INSTRUCTION FOR USE

Bolt one side of the clamp to the support with the M10x25 bolt and nut supplied. Bend the clamp over the duct and fix the clamp in place with a second bolt. Diameters up to 315 mm have 2no M10x25 bolts. Diameters over 400 mm have 1no M10x25 and 1no M10x50 mm bolt and a square washer. Use the square washer against the M10x50 bolt as shown. Adjust as necessary and tighten securely.

Supplied flat for easy transport and storage on site.

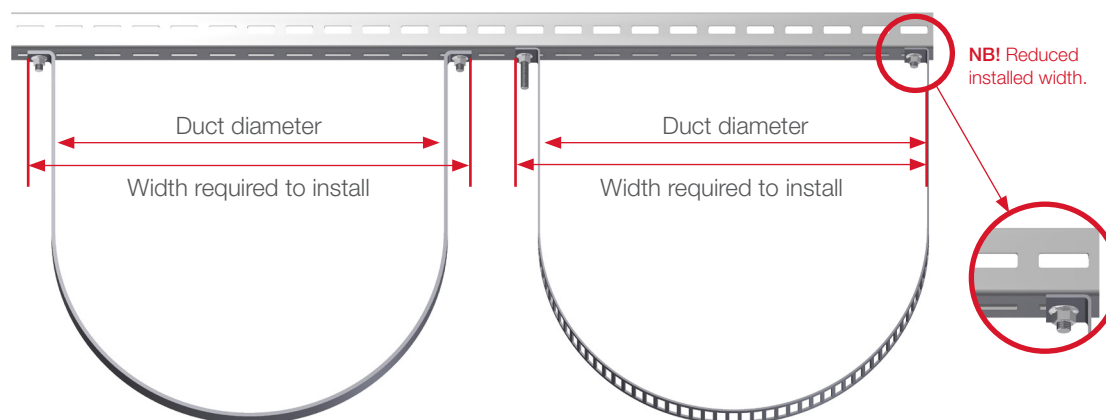


Fixing feet face in the same direction.



Fix one side and bend over duct.

Fixing feet facing in the same direction reduce width required for installation



For Dia > 400 mm, use square washer as shown on the M10x50 bolt.



User Guide for Bolts:
Recommended Torque