

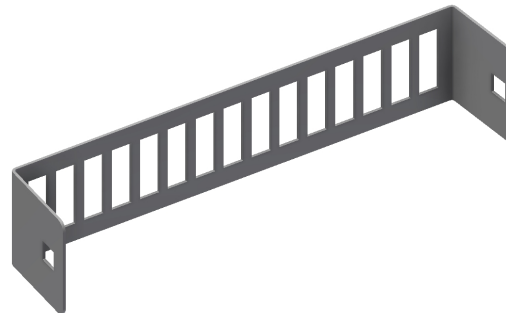
INTENDED USE

Light weight perforated HVAC clamp for insulated ducting or light piping, from 80-200 mm outside diameter - including insulation. Single point fixing, suitable for fixing to standard multidiscipline support systems. Supplied flat for ease of transport and storage on site.

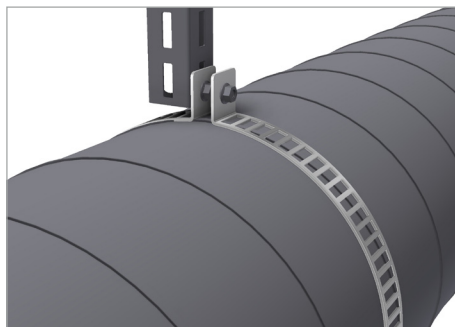
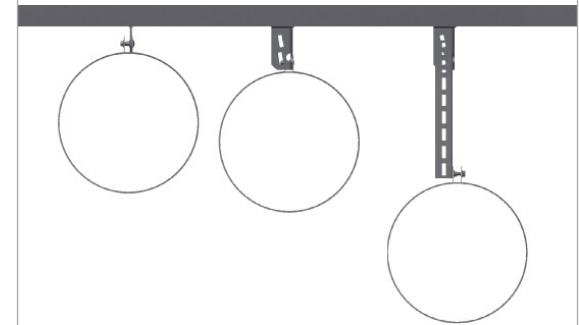
INSTRUCTION FOR USE

Fit the clamp to the support with a self locking bolt and nut. Bend the clamp over the ducting and secure with a second nut. Adjust and tighten securely.

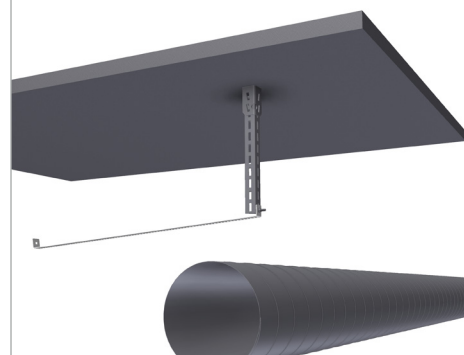
Supplied flat for easy transport and storage on site.



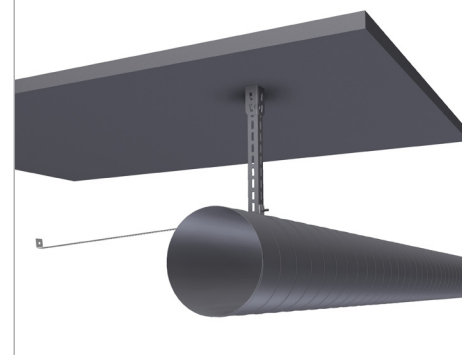
Can be fitted directly to starter bracket, or on Me-kano® support channels for maximum flexibility.



Bolt one end of the clamp to the support.



Position the duct.



Bend the clamp over the duct and secure with a second nut on the bolt.



User Guide for Bolts:
Recommended Torque