

INTENDED USE

Adapter used to fasten a U-Bolt to a Mekano® channel.

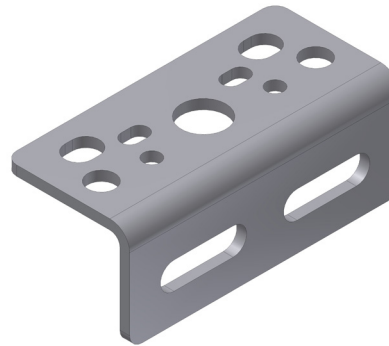
INSTRUCTION FOR USE

Use 2x M10 bolts to fasten the adapter to the Mekano® channel of choice. Slotted holes allow small adjustments.

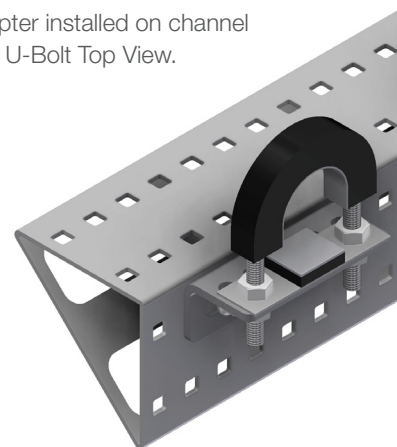
For CH125-2T5, use 2x M12 bolts with the corresponding adapter.

Use the pre-drilled holes on the topside of the adapter to fasten the U-Bolt securely.

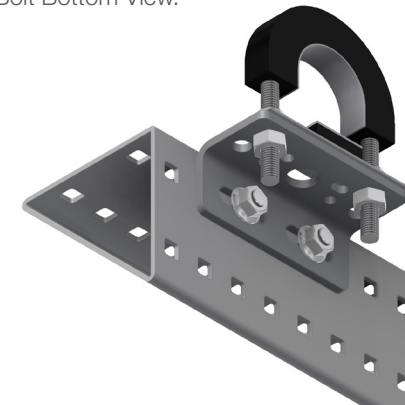
U-Bolt Adapter



Adapter installed on channel with U-Bolt Top View.



Adapter installed on channel with U-Bolt Bottom View.



User Guide for Bolts:
Recommended Torque