

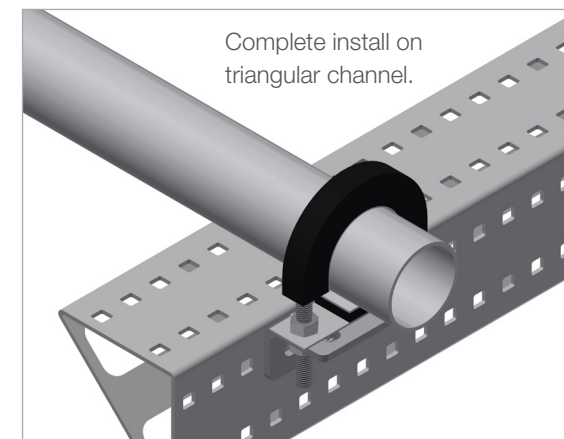
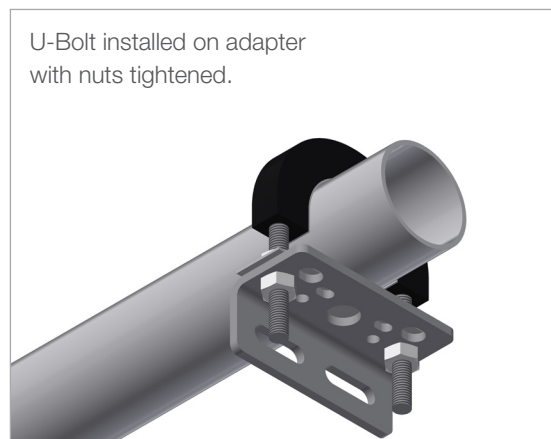
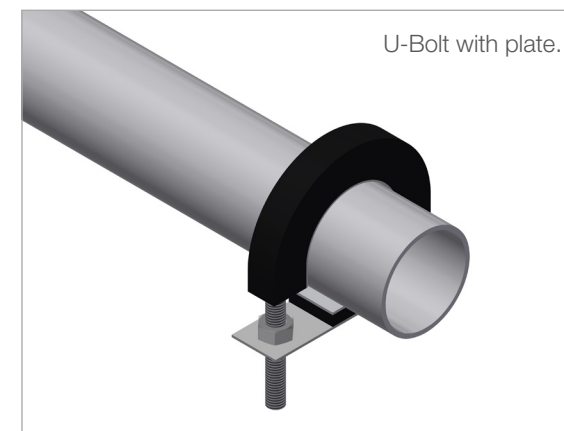
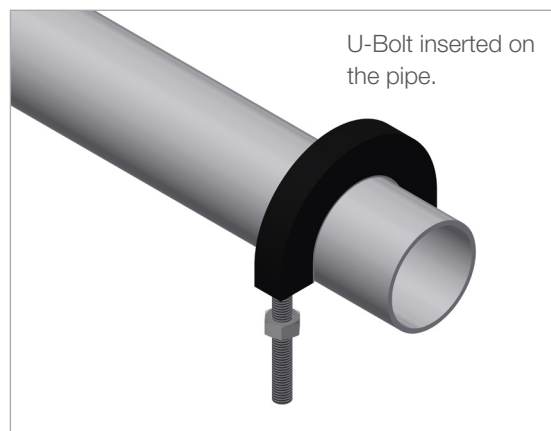
INTENDED USE

Provides support for a pipe and keeps it in place. Non-Grip allows the pipe to slide in the pipe direction.

INSTRUCTION FOR USE

Insert the U-Bolt over the pipe, then add the two upper nuts and screw them $\frac{3}{4}$ of the way up. Then add the accompanying plate with the low friction surface facing the pipe. Insert the bolts on the U-Bolt into an U-Bolt Adapter, and fasten it with the remaining nuts.

Adjust the upper nuts so that the pipe can slide within the clamp, then tighten the lower bolts to fasten the clamp to the adapter. Tighten the upper bolts again to ensure that the U-bolt is secured and allowing the pipe to slide.



User Guide for Bolts:
Recommended Torque