

INTENDED USE

Pipe Clamp to keep pipe in place. Allows for vertical adjustments due to slotted holes and horizontal adjustments due to off-center holes. Only to be used on CH100 and larger channels.

INSTRUCTION FOR USE

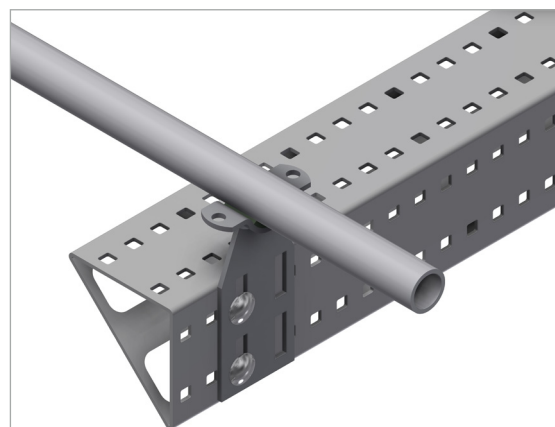
Position the bottom part of the clamp with the perforated plate directly below the pipe. Remember that by rotating the clamp 180°, you get 6 mm adjustments incase bolt holes doesn't align properly.

Add two M10 bolts in the vertically aligned slotted holes, adjust the plate as desired then tighten with two nuts securely.

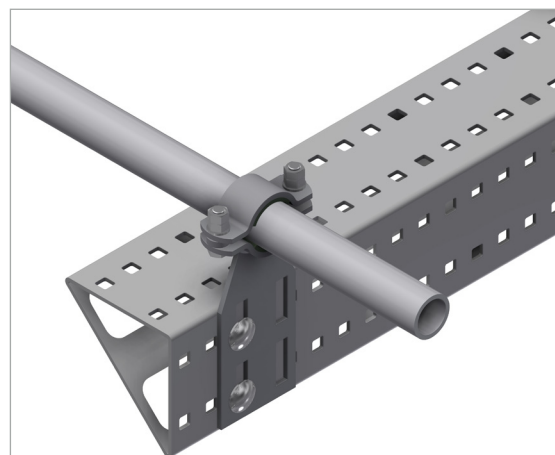
Add top part of pipe clamp to the pipe and secure tightly.



User Guide for Bolts:
Recommended Torque

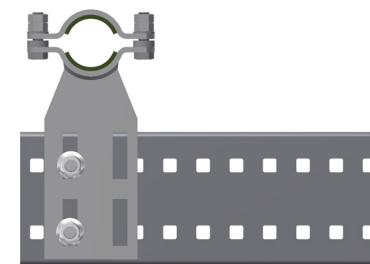


Clamp installed on Channel positioned directly below the pipe.

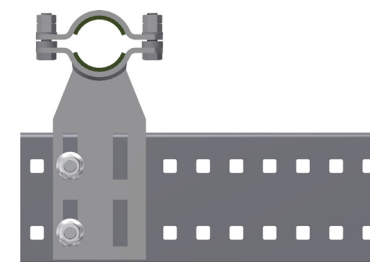


Top part of clamp added and installed.

Pipe clamp starting point.



Pipe Clamp rotated 180°, giving 6 mm step.



Pipe Clamp rotated another 180° and changed bolt holes, giving another 6 mm step.

