

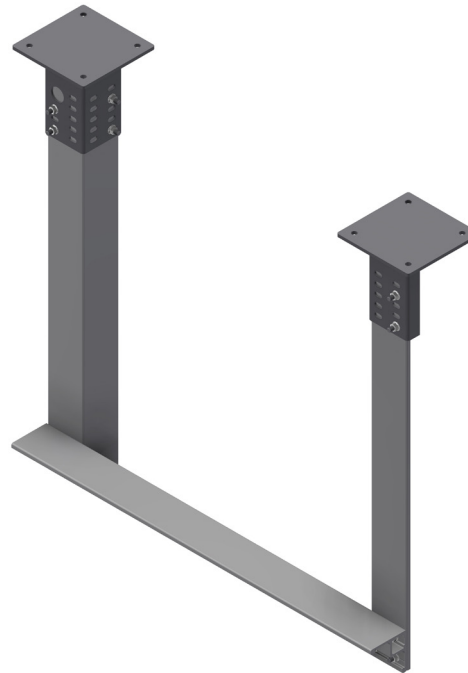
INTENDED USE

The CH100S support channel is a 'triangular' shaped FRP support channel with good torsional resistance. The channel is ideally suited for medium and heavy duty load applications.

INSTRUCTION FOR USE

The channels should be fixed together using M10 hex bolts. Sleeve nut connections are also available, please see user guide 0376 for details. We recommend the use of SS bolts for all FRP supports, however FRP stud bolts can also be used if a full composite system is required.

Drilling of channel is done at site using a SmartJig 87050 for CH100S channels. For more details see user guide 0376 and 0297. For cantilever, use Smart Jig and/or pre-drilled starter bracket as drill jig for connection. It may be recommended to use an additional 100 mm piece of the CH100S channel as a connection between the horizontal and vertical channels for example for L- and T-support.



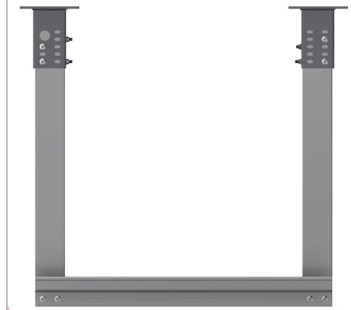
Typical Cantilever



Typical T-Support



Typical U-Support



Typical Goalpost Support



Typical L-Support



User Guide for Bolts:
Recommended Torque

Carbide tip drill bits are best suited for drilling FRP. We recommend sealing the holes with a clear acrylic lacquer suitable for outdoor use. 10 mm drill bit size should be used.