

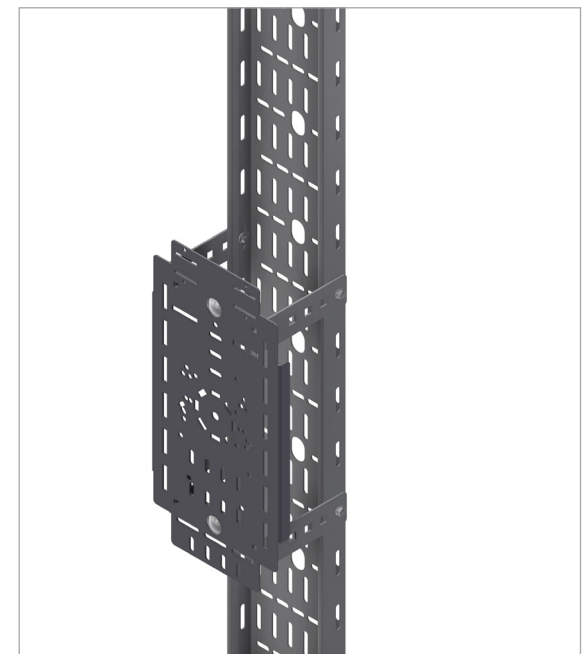
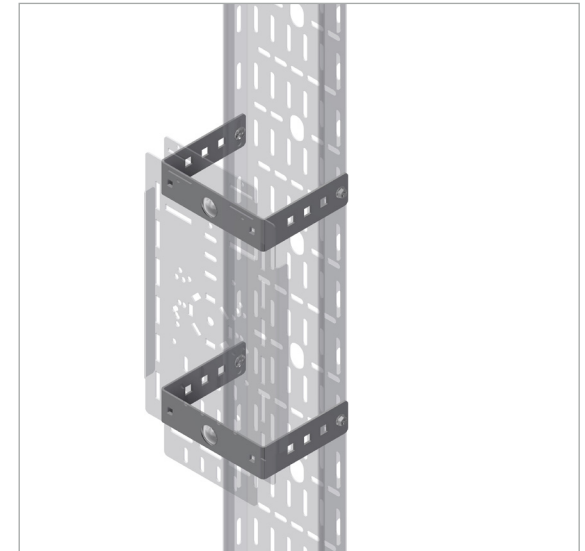
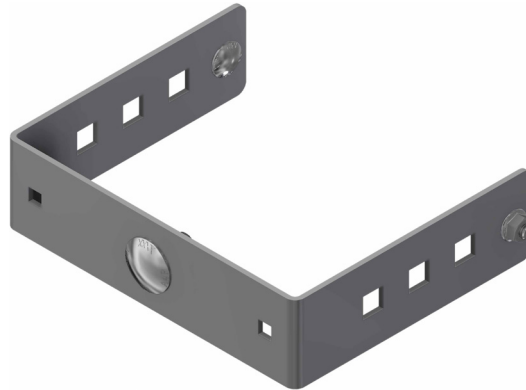
INTENDED USE

Fixing clamp for attaching equipment plate to SPB cable trays. Available for 100 mm to 600 mm widths. To be used in pairs.

INSTRUCTION FOR USE

Attach two fixing clamps to equipment plate using M10 self locking bolts. Then fit the fixing clamps loosely to the tray using M6 self locking bolts. Adjust and tighten securely.

M6 bolts should be fitted from the inside of the tray to prevent damage to cables.



User Guide for Bolts:
Recommended Torque