

INTENDED USE

The CH100S support channel is a 'triangular' shaped FRP support channel with good torsional resistance. The channel is ideally suited for medium and heavy duty load applications

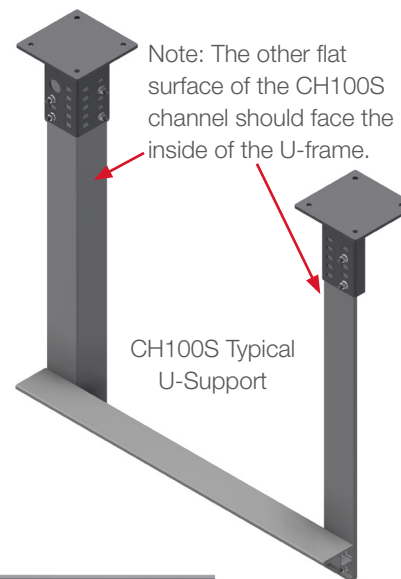
INSTRUCTION FOR USE

The channels should be fixed together using M10 hex bolts. Sleeve nut connections are also available, please see user guide 0376 for details.

We recommend the use of SS bolts for all FRP supports, however FRP stud bolts can also be used if a full composite system is required.

Drilling of channel is done at site and using SmartJig 87050 for CH100s channels. For more details see user guide 0376 and 0297.

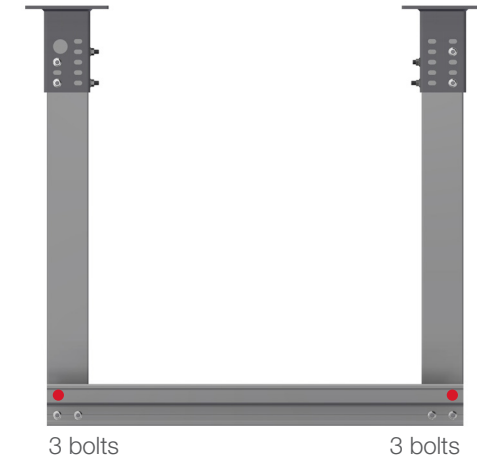
Carbide tip drill bits are best suited for drilling FRP. 10 mm drill bit size should be used.



Bottom view



CH100S fitted back to back. Red dot indicates bolt location inside the box section.

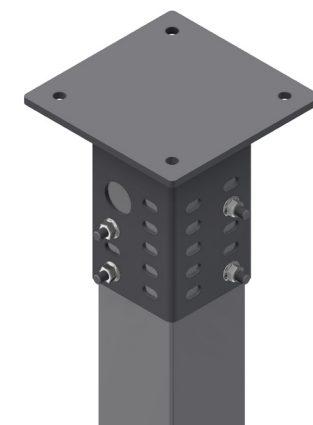


FRP Fastening: Place FRP nut "up-side down" in the box-section to fit the 17 mm wide groove inside box-section.



SS Fastening: Place the hex-bolt inside the box-section. Flange nut will not fit inside.

Starter bracket connection detail.



User Guide for Bolts:
Recommended Torque