

INTENDED USE

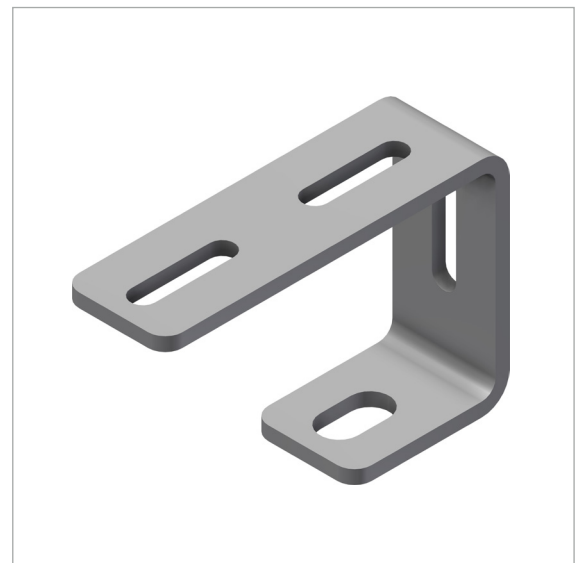
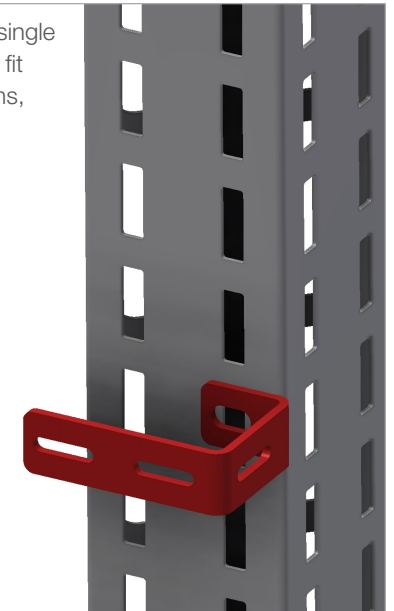
Universal support bracket for lightly loaded cable trays up to 100 mm wide. Suitable for fastening to Mekano® or OE cable ladders.

INSTRUCTION FOR USE

Attach loosely using M10 self locking bolt. Adjust and tighten securely. Cable tray can then be secured using M6 bolts. Bolts should be fitted from the inside of the tray to prevent damage to cables.



Equipped with single hole for M10 to fit M10 applications, like Mekano®.



User Guide for Bolts:
Recommended Torque