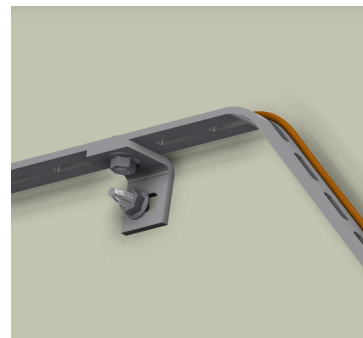
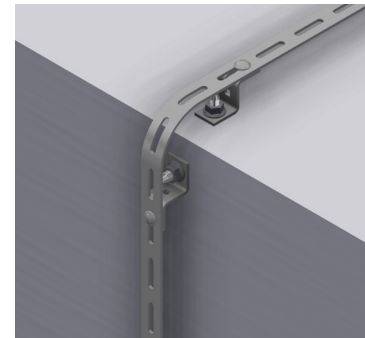
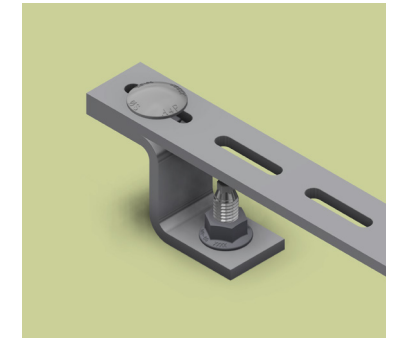


INTENDED USE

Universal brackets for M6 applications. Ideal to support flat bar for single cable routings. With 13 mm hole compatible with Hilti S-BT threaded studs.

INSTRUCTION FOR USE

Scan QR code for fitting instructions for Hilti S-BT. When fitting a flat bar, the bolt should be fitted from the cable facing side to prevent damage to cable.



User Guide for Bolts:
Recommended Torque



Fitting introductions
for S-BT