

INTENDED USE

Starter Bracket for of LOE/FOE cable ladder on roof. Compatible with LOE55/75 and FOE70. Intended to be used with a 300x300x50 mm³ concrete block or similar.

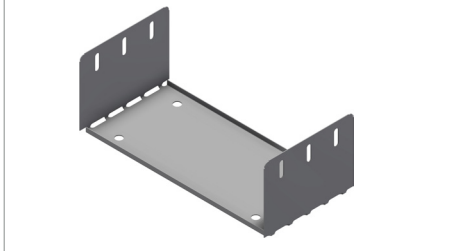
INSTRUCTION FOR USE

The bracket comes flat packed. The two flanges has to be bent up manually to a 90° angle on each side. Fastening of the bracket to the underlying surface is optional.

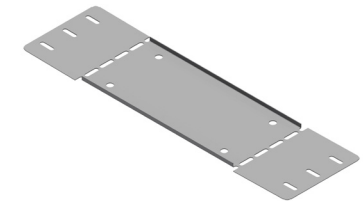
When the concrete block and ladder is placed on the bracket, use two M6 self-locking bolts, adjust and thighten securely.



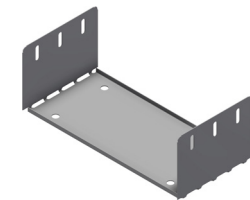
Roof Starter Bracket LOE55/75 / FOE-70



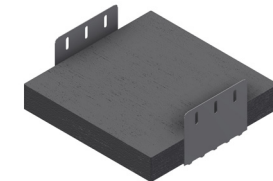
Bracket as delivered



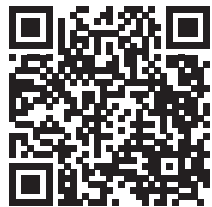
1. Bend flages to 90°



2. Place bracket and concrete block on supporting surface.



3. Fasten ladder using M6 self-locking bolts



User Guide for Bolts:
Recommended Torque