

INTENDED USE

OE Tee-pieces are fixed radius, 3-way 90° “T” junction pieces in the same plane, with splice connectors on one rail of each junction.

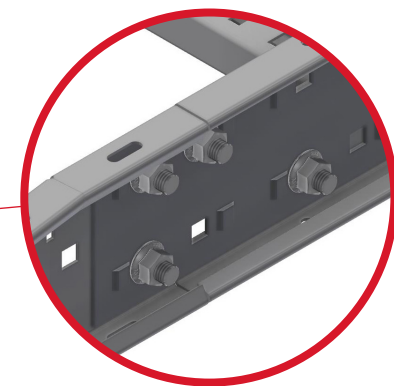
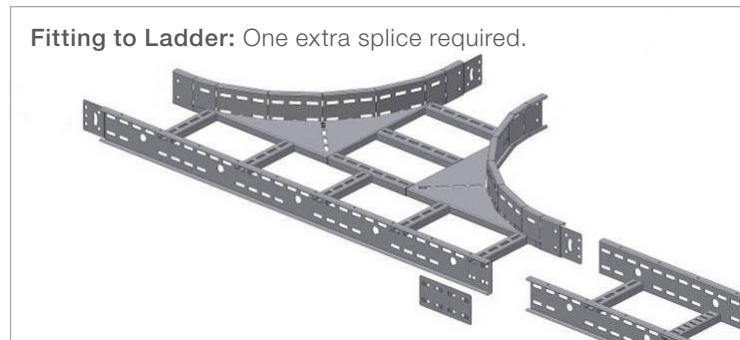
INSTRUCTION FOR USE

Fitting to a ladder:

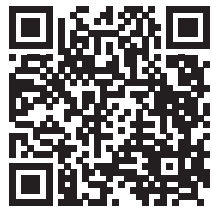
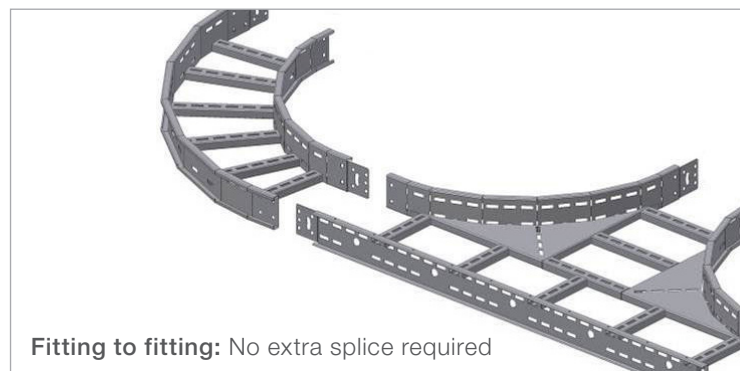
One External Splice piece is required each side. Attach the splice with $\frac{3}{4}$ of the splice connector on the ladder, and $\frac{1}{4}$ on the fitting. Attach the Tee-Piece fitting to the ladder loosely using self locking bolts. Adjust all parts, and tighten securely.

Fitting to another formed piece:

When fitting to another formed piece such as OE elbows, Tee-pieces or Cross-pieces, it is not necessary with extra splice connectors. Attach the parts together loosely using self locking bolts. Adjust all parts, and tighten securely.



When attaching a Fitting to a Ladder: Turn the splice so the notches face outwards



User Guide for Bolts:
Recommended Torque