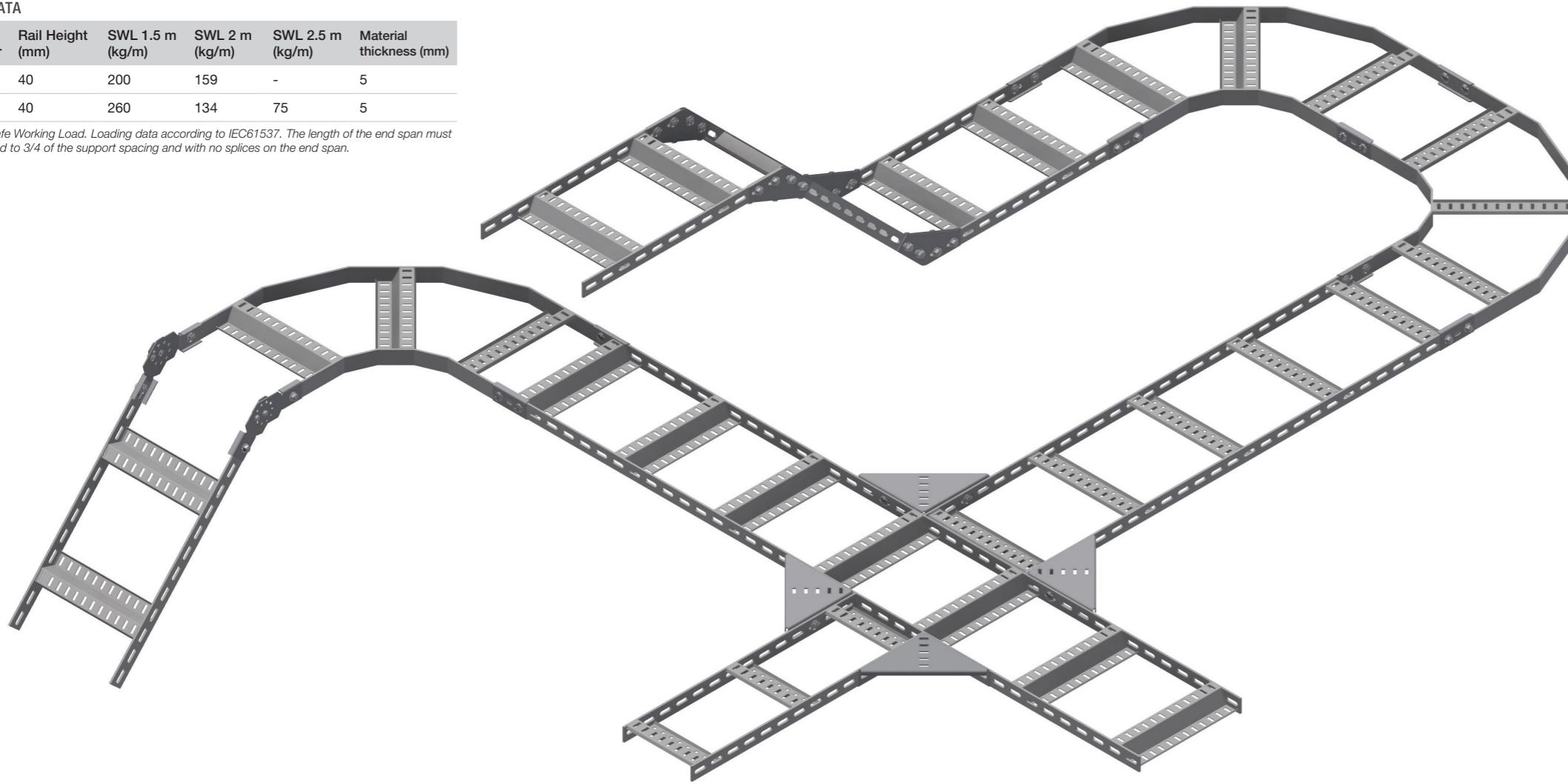


RZE-P Cable Ladder System

LOAD DATA

RZE-P Ladder	Rail Height (mm)	SWL 1.5 m (kg/m)	SWL 2 m (kg/m)	SWL 2.5 m (kg/m)	Material thickness (mm)
SS	40	200	159	-	5
HDG	40	260	134	75	5

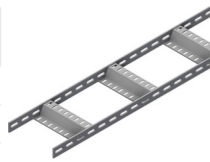
SWL = Safe Working Load. Loading data according to IEC61537. The length of the end span must be reduced to 3/4 of the support spacing and with no splices on the end span.



RZE-P Cable Ladder

Cable Ladder with Z-profiled and slotted rungs. Length = 3 m.

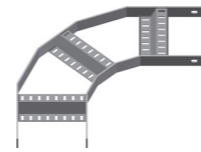
Type Description	SS	HDG
RZE-P CL-100	86819	86780
RZE-P CL-150	86820	86781
RZE-P CL-200	86821	86782
RZE-P CL-250	86822	86783
RZE-P CL-300	86823	86784
RZE-P CL-350	86824	86785
RZE-P CL-400	86825	86786
RZE-P CL-450	86826	86787
RZE-P CL-500	86827	86788
RZE-P CL-600	86828	86789
RZE-P CL-650	86829	86790
RZE-P CL-750	86830	86791
RZE-P CL-900	86831	86792



RZE-P Flat Elbow 90°

90° Flat Elbow for the RZE-R Cable Ladder System. Radius = 200 mm.

Type Description	SS	HDG
RZE-P FE-90-100	87665	87652
RZE-P FE-90-150	87666	87653
RZE-P FE-90-200	87667	87654
RZE-P FE-90-250	87668	87655
RZE-P FE-90-300	87669	87656
RZE-P FE-90-350	87670	87657
RZE-P FE-90-400	87671	87658
RZE-P FE-90-450	87672	87659
RZE-P FE-90-500	87673	87660
RZE-P FE-90-600	87674	87661
RZE-P FE-90-650	87675	87662
RZE-P FE-90-750	87676	87663
RZE-P FE-90-900	87677	87664



Splice Connector

Two Splice Connectors required for each connection.

Type Description	SS	HDG
RZE SC-40-P	82873	85516

Fastener(s) included.



Riser Bracket 45°

Bracket for forming riser. Supplied in pairs.

Type Description	PG
RZE-P RB-45	81769

Fastener(s) included.



Hinge Vertical

Two hinges required for each connection. Can be adjusted in 4° steps.

Type Description	SS	HDG
RZE HV	85490	81575

Fastener(s) included.



A Group Company of HILTI

Øglænd System AS
P.O. box 133, Engelsvollvegen 264
N-4358 Kleppe, Norway

Phone: (+47) 51 78 81 00
E-mail: oglaend@oglaend-system.com
Purchase orders: ordre@oglaend-system.com

www.oglaend-system.com



Exit Plate

Exit Plate for RZE Cable Ladders. Easy to place on the cable ladder rail, no fasteners needed.

Type Description	SS	ZM
A-RZE EX	83598	84290

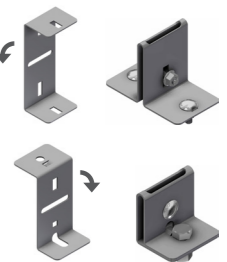


Light Fitting Support

Brackets for RZE Cable Ladders to fit Glamox or Ceag Light Fittings.

Type Description	SS
A-RZE LB -Glamox	85618
A-RZE LB-Ceag	83599

Fastener(s) included.

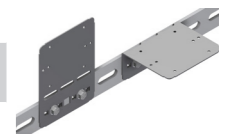


Socket Plate

Can be easily formed to a 90° angle.

Type Description	SS	ZM
A-RZE SO-40	91683	81877

Fastener(s) not included.



Edge Protector

To protect cables from sharp edges. 50 m spool.

Type Description	CS
A-RZE EP	84636



Tee- and Cross-Bracket

Bracket for forming Tee- and Cross-Pieces.

Type Description	SS	HDG
RZE-P TE-PA	87973	87972

Fastener(s) included.

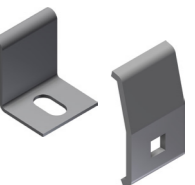


Fixing Clamp

Fixing Clamps for clamping on the siderail of the cable ladder.

Type Description	SS	HDG
RZE FC-40	86876	1372099
RZE FC-CH-30/40	85503*	1372098

*Fastener(s) included. *Fastener(s) not included.*



Please note: Whilst every effort has been made to ensure the accuracy of the content, our systems and products are under continual improvement and development, therefore we reserve the right to make changes to products or specifications without prior notice. Product graphics are intended to be representative, however small differences in actual products may occur.