

INTENDED USE

Outside L-Splice for attaching two cable trays together with support on outside and bottom edge. Note, bolt pattern will vary depending on type and dimension.

NB: Outside L-Splice only compatible with raised cover clamps.

A splice plate fitted between the outside splice connectors is recommended for trays over 300 mm wide.

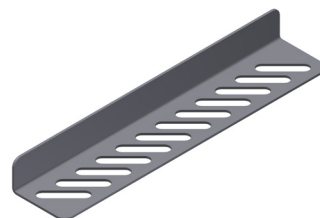
Not suitable for 50 mm widths. SPB inside splice connector with notches are recommended for stainless steel applications.

INSTRUCTION FOR USE

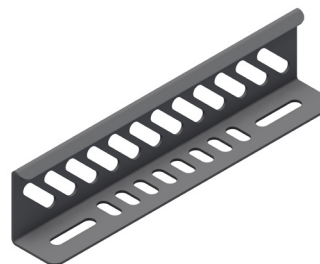
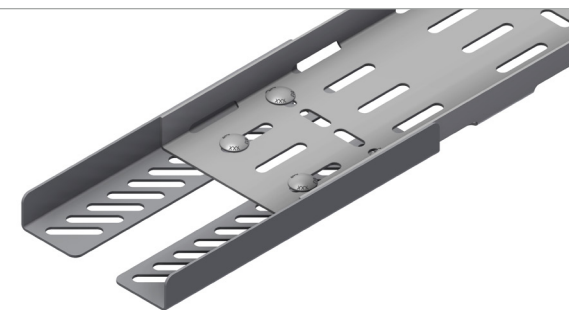
Fit the splice equally over the parts being joined.
Attach loosely with self locking bolts.
Adjust and tighten securely.



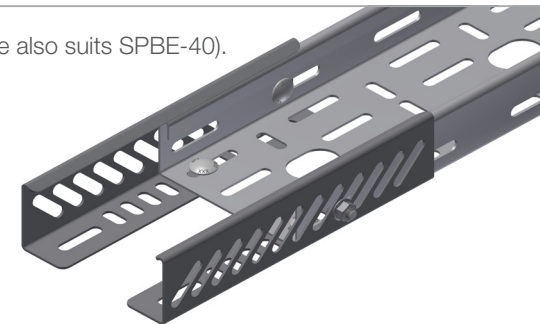
User Guide for Bolts:
Recommended Torque



SPBE-20



SPB-RF-40 (Splice also suits SPBE-40).



Recommended Splice Plate for
tray widths over 300 mm.

